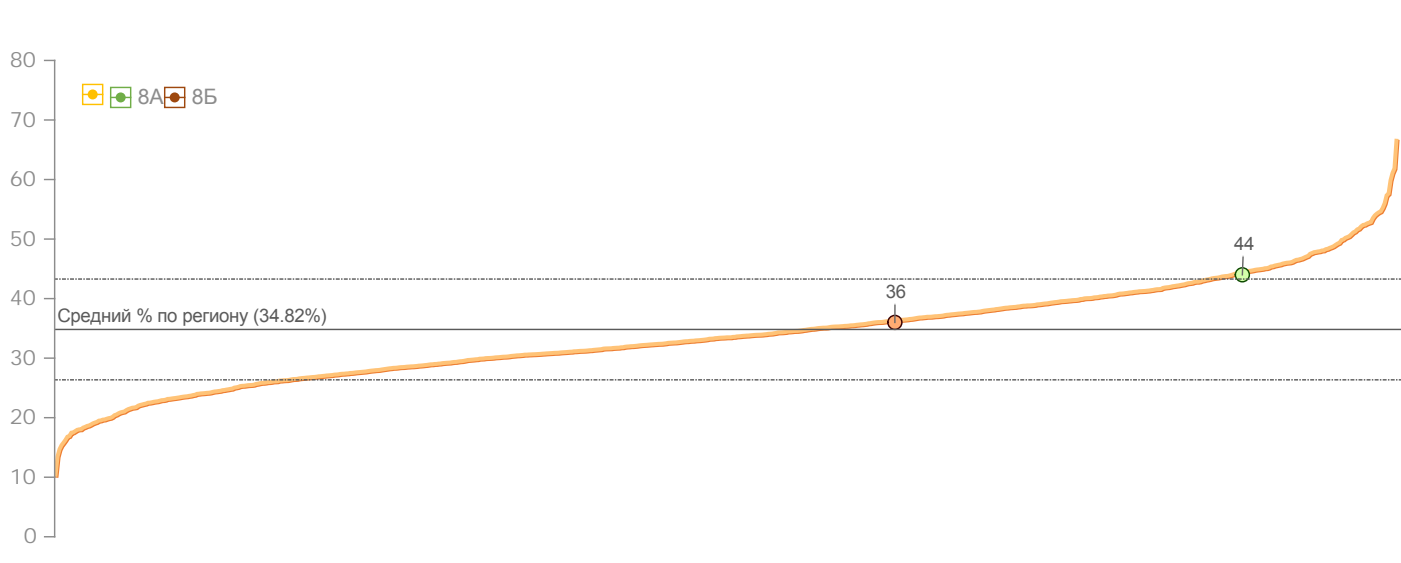
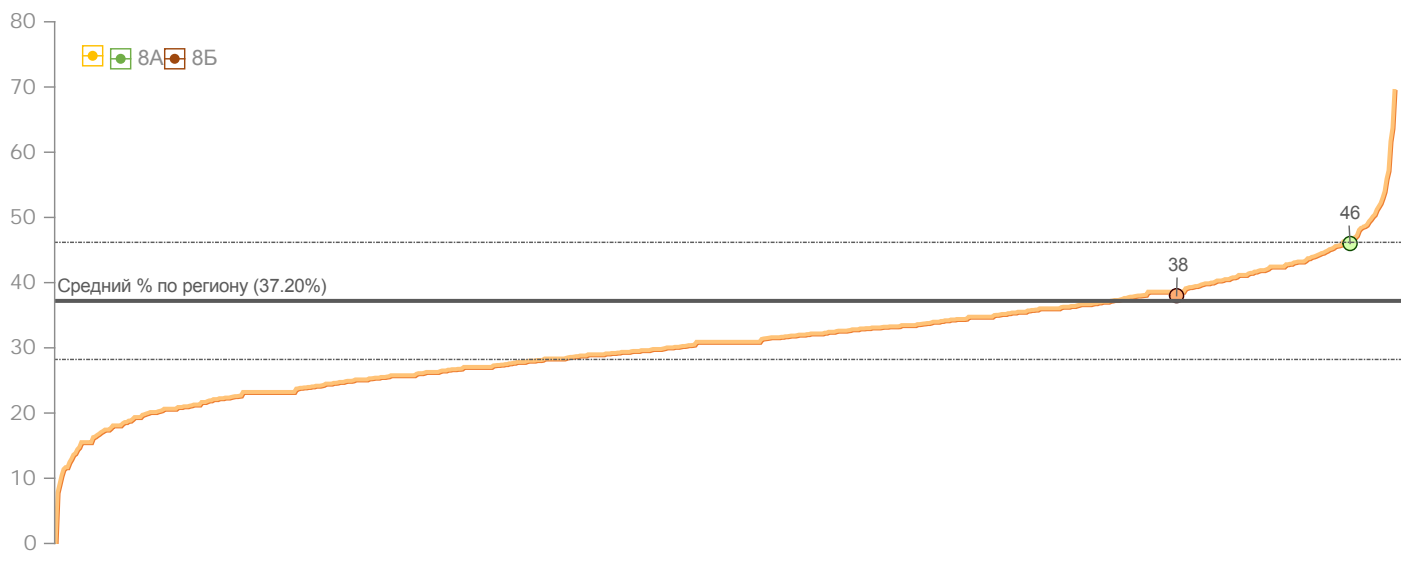
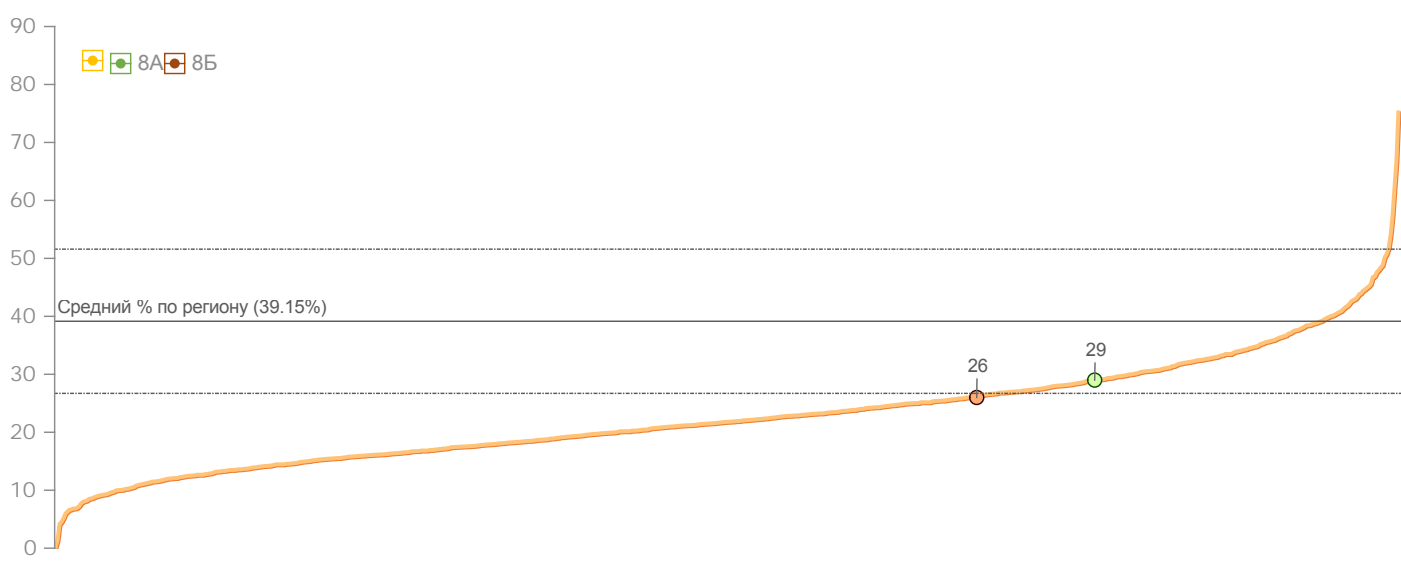
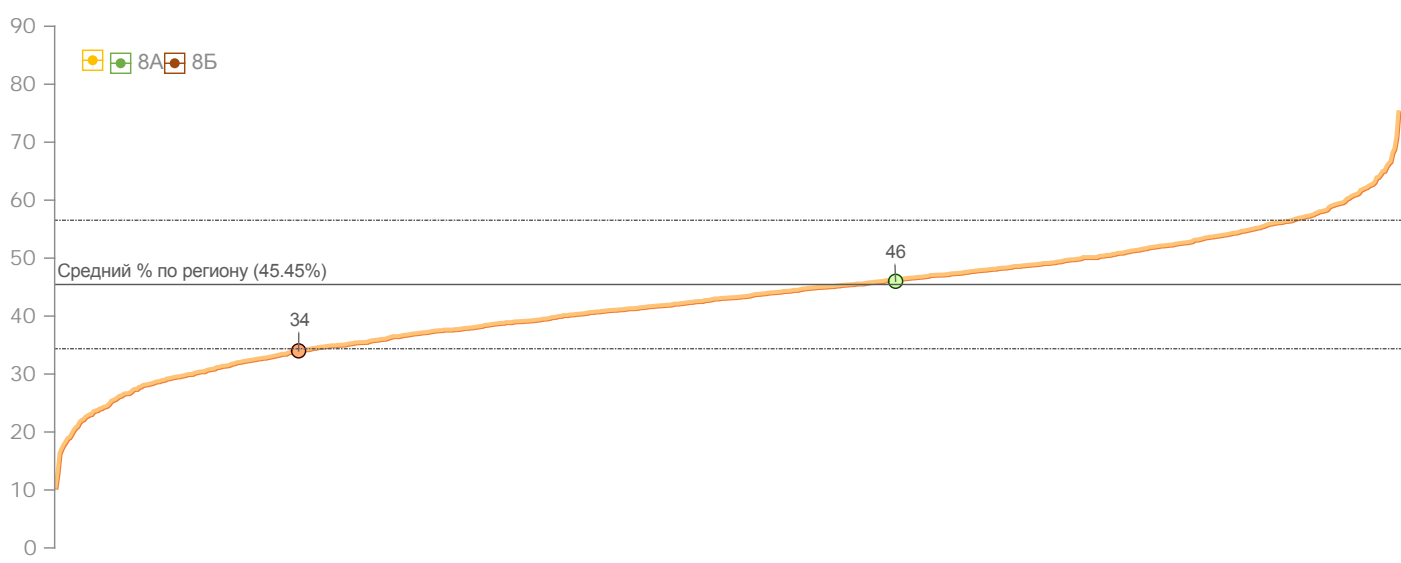
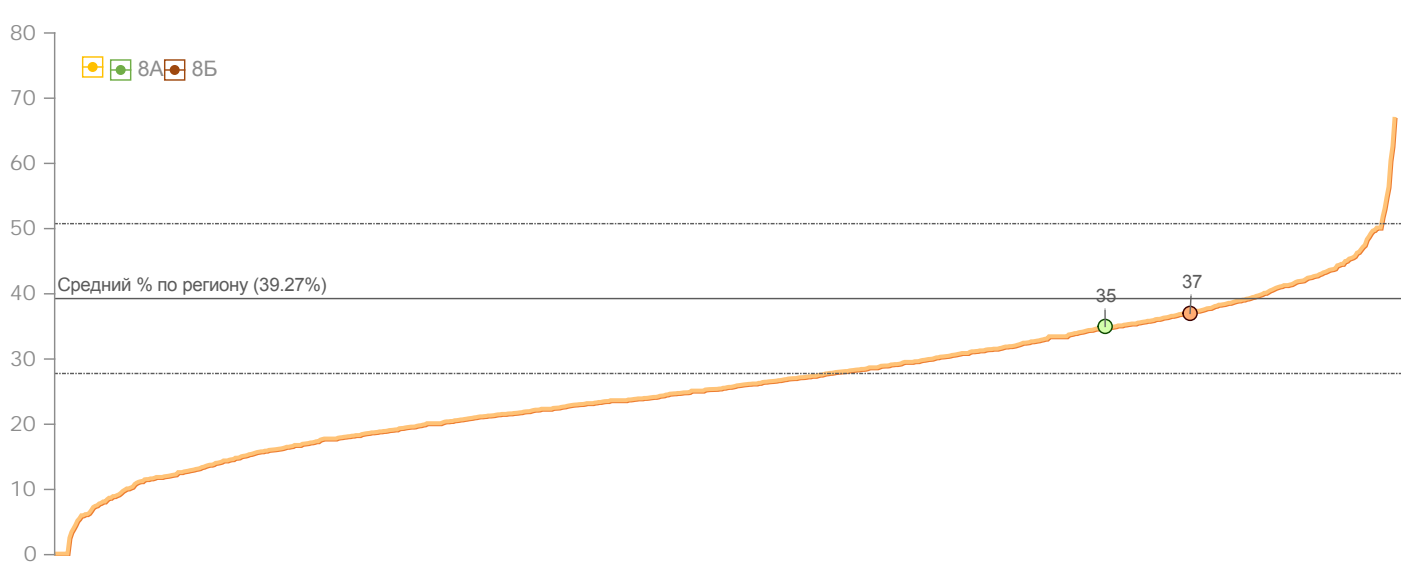
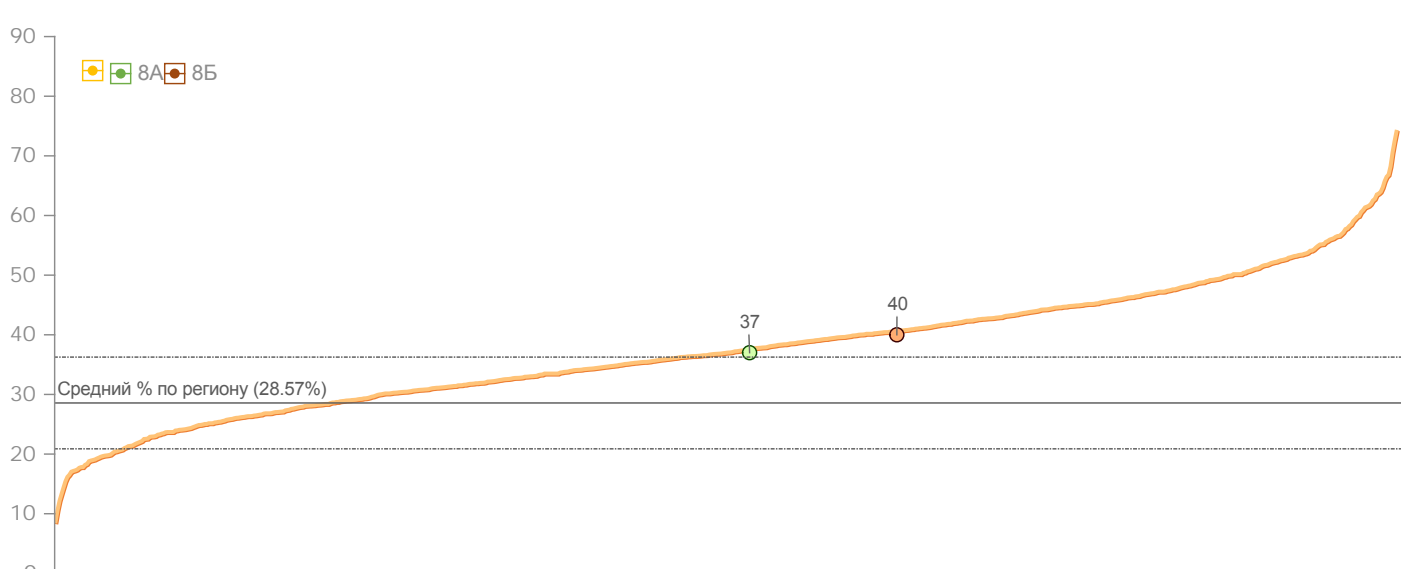
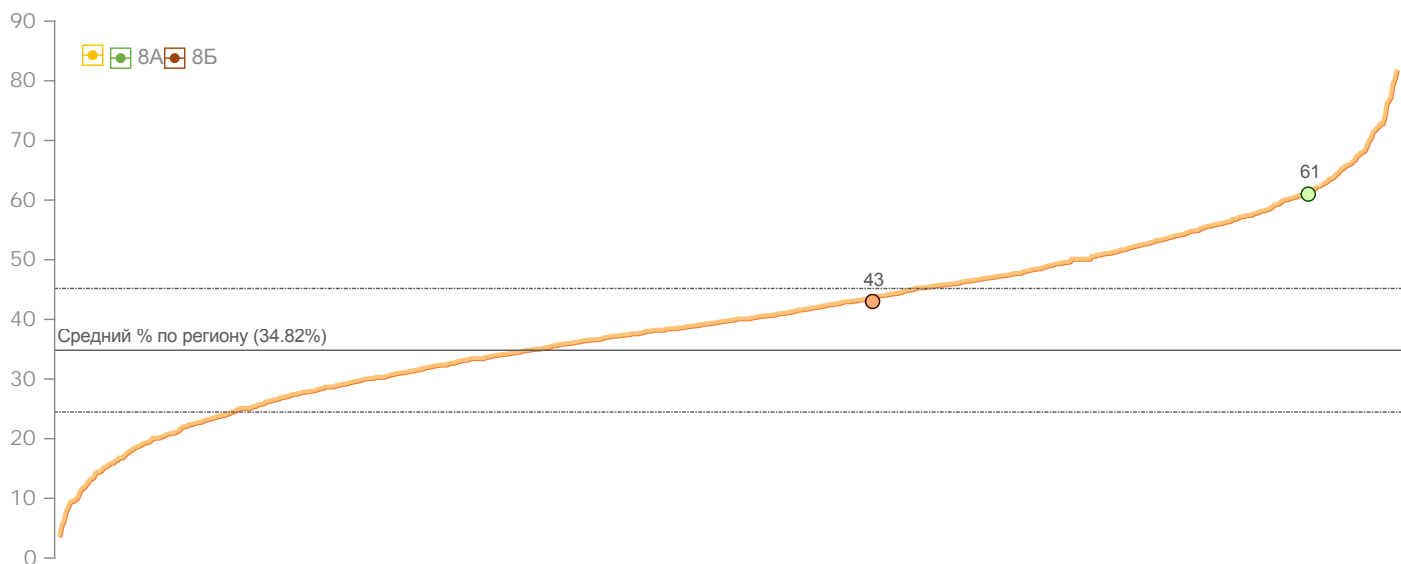


1.

	%	%						
8	44.20	61	46	35	29	46	37	95.0
8	36.14	43	38	37	26	34	40	86.4
	40.02	55	42	36	27	40	39	90.5
	34.82	41	32	27	24	44	39	82.3

1.2.



2.

8

	%	%						
1	69.23	100	71	-	80	-	67	
2	46.15	88	29	-	40	-	50	
3	46.15	100	57	-	0	-	17	
4	58.97	100	43	-	20	-	67	
5	32.56	75	-	-	17	29	17	
6	50.00	100	-	-	0	62	67	
7	65.00	-	-	-	40	69	75	
8	37.21	63	-	-	0	57	0	
9	46.51	75	-	-	33	43	67	
10	43.59	38	43	-	60	-	17	
11	37.21	0	-	-	0	43	50	
12	53.49	100	-	-	33	64	0	
14	38.46	-	80	0	50	-	75	
15	30.95	25	-	-	33	62	17	
16	46.51	63	-	-	20	43	17	
17	51.28	25	57	-	60	-	67	
18	46.15	88	14	-	20	-	50	
19	34.88	75	-	-	67	21	33	
21	9.30	0	-	-	20	0	33	
22	46.15	-	71	0	33	-	100	
	43.81	66	51	0	31	44	42	

8

	%	%						
1	50.00	-	-	-	60	46	50	

2	30.77	63	14	-	0	-	67	
4	51.35	-	60	-	40	-	100	
5	10.00	-	-	-	20	15	0	
6	38.46	13	71	-	20	-	33	
7	5.00	-	-	-	0	0	0	
8	58.14	88	-	-	20	57	50	
9	41.03	-	14	0	50	-	75	
10	48.84	88	-	-	20	64	33	
11	38.46	-	40	0	33	-	75	
12	41.46	75	-	-	80	31	17	
13	59.46	-	100	-	40	-	75	
14	11.63	0	-	-	40	7	0	
15	43.59	-	29	0	17	-	100	
16	33.33	25	-	-	17	54	50	
17	33.33	25	-	-	17	46	50	
18	28.21	-	40	0	0	-	0	
19	25.64	-	29	0	33	-	50	
20	25.64	-	14	100	17	-	50	
21	38.10	50	-	-	33	38	33	
22	20.51	13	57	-	0	-	0	
23	64.10	-	60	0	100	-	100	
	35.78	44	42	14	30	36	44	

3.1.

: 8

1

		()		()	()	()
1.						
. 8						
1	1		1	100.00	38.10	36.01
2	2		2	0.00	19.60	18.48
. 8						
3	1		1	0.00	56.26	48.86
4	2		2	100.00	35.35	32.25
5	3		2	0.00	16.44	18.83
2.						
. 8						
6	1		1	100.00	59.95	54.40
7	2		2	50.00	39.10	35.17
8	3		1	0.00	7.08	10.75
9	4		2	0.00	34.88	31.16
. 8						
10	1		1	100.00	81.20	77.58
11	2		1	100.00	90.46	85.70
12	3		2	50.00	17.98	14.41
13	4		1	100.00	20.71	21.32
14	5		2	0.00	20.57	16.67
3.						

. 8						
15	1		1	100.00	56.35	52.29
16	2	-	1	100.00	81.76	79.39
17	3	,	1	0.00	70.54	65.02
18	4		1	100.00	58.92	51.76
19	5	-	1	100.00	60.54	58.71
20	6		2	0.00	35.74	33.85
21	7	(- -) , - -	1	0.00	44.32	41.22
22	8	,	1	100.00	32.97	30.54
4.						
. 8						
23	1	« ».	2	0.00	32.46	27.65
24	2	,	1	0.00	10.57	10.73
25	3	/	2	0.00	41.57	40.10
26	4	,	2	0.00	33.15	30.73
27	5	.	2	50.00	20.58	19.50

: 8

2

() () () ()						
1.						
. 8						
1	1		1	100.00	56.35	52.29
2	2	-	1	100.00	81.76	79.39
3	3	,	1	100.00	70.54	65.02
4	4		1	100.00	58.92	51.76

5	5	-	1	100.00	60.54	58.71
6	6		2	100.00	35.74	33.85
7	7	(- -)	1	0.00	44.32	41.22
8	8		1	0.00	32.97	30.54
2.						
.8						
9	1	« ».	2	50.00	32.46	27.65
10	2		1	0.00	10.57	10.73
11	3	/	2	0.00	41.57	40.10
12	4		2	50.00	33.15	30.73
13	5		2	0.00	20.58	19.50
3.						
.8						
14	1		1	100.00	38.10	36.01
15	2		2	0.00	19.60	18.48
.8						
16	1		1	100.00	56.26	48.86
17	2		2	0.00	35.35	32.25
18	3		2	0.00	16.44	18.83
4.						
.8						
19	1		2	100.00	18.33	15.79
20	2		1	100.00	67.78	68.28
21	3		2	50.00	38.61	37.11
22	4		1	100.00	30.28	28.37
23	5		1	0.00	31.39	28.77

. 8						
24	1		1	0.00	17.78	15.67
25	2		1	100.00	46.11	42.79
26	3		1	100.00	36.11	32.63
27	4		2	0.00	23.47	21.81
28	5		1	0.00	12.22	9.70

: 8

3

()						
1.						
. 8						
1	1		1	100.00	28.42	26.16
2	2	()	1	0.00	35.20	34.17
. 8						
3	1		1	100.00	35.33	34.40
4	2		2	0.00	13.51	13.65
5	3		2	0.00	1.77	3.15
2.						
? 8						
6	1		2	100.00	75.63	73.27
7	2		2	100.00	91.83	90.10
8	3		2	100.00	36.70	36.59
9	4		1	0.00	20.50	22.20
10	5		1	100.00	63.16	62.09

. 8						
11	1		1	100.00	63.43	63.09
12	2		2	50.00	56.23	54.23
13	3		2	0.00	19.39	19.31
14	4		1	100.00	6.65	7.62
15	5		2	0.00	18.84	17.44
3.						
. 8						
16	1	« »	2	100.00	32.94	32.76
17	2		2	50.00	15.87	15.64
18	3		2	100.00	37.30	30.23
19	4		2	50.00	28.84	27.10
4.						
. 8						
20	1		1	100.00	56.35	52.29
21	2	-	1	100.00	81.76	79.39
22	3		1	0.00	70.54	65.02
23	4		1	100.00	58.92	51.76
24	5	-	1	100.00	60.54	58.71
25	6		2	100.00	35.74	33.85
26	7	(- -) , - -) , - -	1	100.00	44.32	41.22
27	8		1	100.00	32.97	30.54

: 8

4

		()		()	()	()
1.						

.8						
1	1		2	42.86	18.33	15.79
2	2		1	100.00	67.78	68.28
3	3		2	50.00	38.61	37.11
4	4		1	28.57	30.28	28.37
5	5		1	28.57	31.39	28.77
.8						
6	1		1	14.29	17.78	15.67
7	2		1	71.43	46.11	42.79
8	3		1	42.86	36.11	32.63
9	4		2	50.00	23.47	21.81
10	5		1	14.29	12.22	9.70
2.						
.8						
11	1		1	14.29	10.00	10.12
12	2		1	0.00	14.31	14.32
13	3		1	100.00	51.67	46.71
14	4		1	71.43	19.58	19.52
15	5	(/)	1	14.29	26.94	25.43
16	6		2	50.00	46.18	42.73
17	7	(- -)	1	0.00	9.03	7.67
3.						
.8						
18	1		1	71.43	28.42	26.16
19	2	()	1	57.14	35.20	34.17

. 8						
20	1		1	57.14	35.33	34.40
21	2		2	42.86	13.51	13.65
22	3		2	7.14	1.77	3.15
4.						
. 8						
23	1		2	85.71	42.82	38.71
24	2		2	78.57	41.83	37.64
25	3		1	85.71	60.28	51.95
26	4		2	71.43	35.07	33.60
27	5		2	71.43	50.28	47.82
28	6		2	71.43	45.07	41.89

: 8

5

()						
1.						
? 8						
1	1		2	100.00	75.63	73.27
2	2		2	100.00	91.83	90.10
3	3		2	25.00	36.70	36.59
4	4		1	0.00	20.50	22.20
5	5		1	50.00	63.16	62.09
. 8						
6	1		1	100.00	63.43	63.09
7	2		2	100.00	56.23	54.23
8	3		2	25.00	19.39	19.31

9	4		1	0.00	6.65	7.62
10	5		2	25.00	18.84	17.44
2.						
.8						
11	1		1	50.00	38.10	36.01
12	2		2	0.00	19.60	18.48
.8						
13	1		1	50.00	56.26	48.86
14	2		2	0.00	35.35	32.25
15	3		2	0.00	16.44	18.83
3.						
.8						
16	1		1	50.00	56.99	51.89
17	2		2	0.00	32.47	31.98
18	3		2	50.00	53.01	49.53
19	4		2	50.00	37.95	36.06
20	5		1	100.00	48.77	44.61
21	6		2	50.00	43.84	42.47
4.						
.8						
22	1		1	0.00	10.00	10.12
23	2		1	0.00	14.31	14.32
24	3		1	50.00	51.67	46.71
25	4		1	100.00	19.58	19.52
26	5	(/)	1	0.00	26.94	25.43
27	6		2	50.00	46.18	42.73
28	7	(- -)	1	0.00	9.03	7.67

: 8

6

		()		()	()	()
1.						
.8						
1	1		1	0.00	10.00	10.12
2	2		1	0.00	14.31	14.32
3	3		1	60.00	51.67	46.71
4	4		1	20.00	19.58	19.52
5	5	(/)	1	20.00	26.94	25.43
6	6		2	60.00	46.18	42.73
7	7	(- -)	1	0.00	9.03	7.67
2.						
.8						
8	1		1	20.00	56.99	51.89
9	2		2	40.00	32.47	31.98
10	3		2	50.00	53.01	49.53
11	4		2	50.00	37.95	36.06
12	5		1	80.00	48.77	44.61
13	6		2	80.00	43.84	42.47
3.						
.8						
14	1	« »	1	60.00	88.17	85.83
15	2		2	20.00	34.95	34.03
16	3		2	40.00	48.39	47.90
17	4		1	40.00	42.47	40.13
18	5		2	60.00	43.55	42.13

18	5		2	60.00	43.55	42.13
. 8						
19	1		2	40.00	46.91	45.50
20	2		2	30.00	15.55	14.73
21	3		2	30.00	36.96	35.49
22	4	/	2	70.00	44.35	39.89
23	5		1	100.00	64.25	62.28
4.						
. 8						
24	1		1	40.00	38.10	36.01
25	2		2	10.00	19.60	18.48
. 8						
26	1		1	40.00	56.26	48.86
27	2		2	40.00	35.35	32.25
28	3		2	20.00	16.44	18.83

: 8

7

		()		()	()	()
1.						
. 8						
1	1		2	50.00	42.82	38.71
2	2		2	50.00	41.83	37.64
3	3		1	33.33	60.28	51.95
4	4		2	33.33	35.07	33.60
5	5		2	66.67	50.28	47.82
6	6		2	33.33	45.07	41.89
2.						

.8						
7	1		1	0.00	28.42	26.16
8	2	()	1	66.67	35.20	34.17
.8						
9	1		1	0.00	35.33	34.40
10	2		2	16.67	13.51	13.65
11	3		2	0.00	1.77	3.15
3.						
.8						
12	1		1	0.00	10.00	10.12
13	2		1	33.33	14.31	14.32
14	3		1	66.67	51.67	46.71
15	4		1	33.33	19.58	19.52
16	5	(/)	1	0.00	26.94	25.43
17	6		2	0.00	46.18	42.73
18	7	(- -)	1	0.00	9.03	7.67
4.						
.8						
19	1	« »	1	66.67	88.17	85.83
20	2		2	50.00	34.95	34.03
21	3		2	33.33	48.39	47.90
22	4		1	66.67	42.47	40.13
23	5		2	33.33	43.55	42.13
.8						

24	1		2	50.00	46.91	45.50
25	2		2	0.00	15.55	14.73
26	3		2	16.67	36.96	35.49
27	4		2	16.67	44.35	39.89
28	5		1	66.67	64.25	62.28

: 8

1

		()		()	()	()
1.						
. 8						
1	1		1	66.67	38.10	36.01
2	2		2	33.33	19.60	18.48
. 8						
3	1		1	66.67	56.26	48.86
4	2		2	33.33	35.35	32.25
5	3		2	33.33	16.44	18.83
2.						
. 8						
6	1		1	66.67	59.95	54.40
7	2		2	0.00	39.10	35.17
8	3		1	0.00	7.08	10.75
9	4		2	50.00	34.88	31.16
. 8						
10	1		1	33.33	81.20	77.58
11	2		1	100.00	90.46	85.70
12	3		2	33.33	17.98	14.41

13	4		1	33.33	20.71	21.32
14	5		2	16.67	20.57	16.67
3.						
.8						
15	1		1	33.33	56.35	52.29
16	2	-	1	66.67	81.76	79.39
17	3		1	66.67	70.54	65.02
18	4		1	100.00	58.92	51.76
19	5	-	1	66.67	60.54	58.71
20	6		2	16.67	35.74	33.85
21	7	(- -)	1	66.67	44.32	41.22
22	8		1	33.33	32.97	30.54
4.						
.8						
23	1	« ».	2	83.33	32.46	27.65
24	2		1	0.00	10.57	10.73
25	3	/	2	83.33	41.57	40.10
26	4		2	33.33	33.15	30.73
27	5		2	33.33	20.58	19.50

: 8

2

		()		()	()	()
1.						
.8						
1	1		1	25.00	56.35	52.29

2	2	-	1	100.00	81.76	79.39
3	3	,	1	75.00	70.54	65.02
4	4		1	75.00	58.92	51.76
5	5	-	1	75.00	60.54	58.71
6	6		2	25.00	35.74	33.85
7	7	(- -) , -) , -	1	50.00	44.32	41.22
8	8	,	1	25.00	32.97	30.54
2.						
. 8						
9	1	« ».	2	50.00	32.46	27.65
10	2	,	1	25.00	10.57	10.73
11	3	/	2	37.50	41.57	40.10
12	4	,	2	25.00	33.15	30.73
13	5	,	2	25.00	20.58	19.50
3.						
. 8						
14	1	,	1	25.00	38.10	36.01
15	2	,	2	12.50	19.60	18.48
. 8						
16	1	,	1	50.00	56.26	48.86
17	2	,	2	37.50	35.35	32.25
18	3		2	25.00	16.44	18.83
4.						
. 8						
19	1		2	0.00	18.33	15.79

20	2		1	50.00	67.78	68.28
21	3		2	37.50	38.61	37.11
22	4		1	25.00	30.28	28.37
23	5		1	50.00	31.39	28.77
.8						
24	1		1	0.00	17.78	15.67
25	2		1	50.00	46.11	42.79
26	3		1	25.00	36.11	32.63
27	4		2	12.50	23.47	21.81
28	5		1	25.00	12.22	9.70

: 8

3

		()		()	()	()
1.						
.8						
1	1		1	100.00	28.42	26.16
1	1		2	0.00	28.42	26.16
2	2	()	1	33.33	35.20	34.17
.8						
3	1		1	33.33	35.33	34.40
4	2		2	0.00	13.51	13.65
5	3		2	0.00	1.77	3.15
2.						
? 8						

6	1		1	0.00	75.63	73.27
6	1		2	0.00	75.63	73.27
7	2		2	66.67	91.83	90.10
8	3		2	0.00	36.70	36.59
9	4		1	0.00	20.50	22.20
10	5		1	66.67	63.16	62.09
.8						
11	1		1	0.00	63.43	63.09
12	2		2	33.33	56.23	54.23
13	3		2	33.33	19.39	19.31
14	4		1	0.00	6.65	7.62
15	5		2	0.00	18.84	17.44
3.						
.8						
16	1	« »	2	33.33	32.94	32.76
17	2		2	0.00	15.87	15.64
18	3		2	33.33	37.30	30.23
19	4		2	16.67	28.84	27.10
4.						
.8						
20	1		1	0.00	56.35	52.29
21	2	-	1	0.00	81.76	79.39
22	3		1	33.33	70.54	65.02
23	4		1	33.33	58.92	51.76
24	5	-	1	33.33	60.54	58.71
25	6		2	33.33	35.74	33.85
26	7	(- -)	1	33.33	44.32	41.22
27	8		1	33.33	32.97	30.54

: 8

4

		()		()	()	()
1.						
.8						
1	1		2	66.67	18.33	15.79
2	2		1	66.67	67.78	68.28
3	3		2	33.33	38.61	37.11
4	4		1	33.33	30.28	28.37
5	5		1	100.00	31.39	28.77
.8						
6	1		1	0.00	17.78	15.67
7	2		1	100.00	46.11	42.79
8	3		1	33.33	36.11	32.63
9	4		2	0.00	23.47	21.81
10	5		1	0.00	12.22	9.70
2.						
.8						
11	1		1	33.33	10.00	10.12
12	2		1	33.33	14.31	14.32
13	3		1	33.33	51.67	46.71
14	4		1	0.00	19.58	19.52
15	5	(/)	1	0.00	26.94	25.43
16	6		2	66.67	46.18	42.73
17	7	(- -)	1	0.00	9.03	7.67
3.						

3.						
.8						
18	1		1	0.00	28.42	26.16
19	2	()	1	0.00	35.20	34.17
.8						
20	1		1	33.33	35.33	34.40
21	2		2	16.67	13.51	13.65
22	3		2	0.00	1.77	3.15
4.						
.8						
23	1		2	16.67	42.82	38.71
24	2		2	0.00	41.83	37.64
25	3		1	66.67	60.28	51.95
26	4		2	33.33	35.07	33.60
27	5		2	16.67	50.28	47.82
28	6		2	66.67	45.07	41.89

: 8

5

()						
1.						
.8						
1	1		2	66.67	75.63	73.27
2	2		2	100.00	91.83	90.10
3	3		2	33.33	36.70	36.59
4	4		1	0.00	20.50	22.20
5	5		1	33.33	63.16	62.09

.8						
6	1		1	66.67	63.43	63.09
7	2		2	66.67	56.23	54.23
8	3		2	0.00	19.39	19.31
9	4		1	0.00	6.65	7.62
10	5		2	0.00	18.84	17.44
2.						
.8						
11	1		1	0.00	38.10	36.01
12	2		2	16.67	19.60	18.48
.8						
13	1		1	100.00	56.26	48.86
14	2		2	0.00	35.35	32.25
15	3		2	0.00	16.44	18.83
3.						
.8						
16	1		1	100.00	56.99	51.89
17	2		2	33.33	32.47	31.98
18	3		2	83.33	53.01	49.53
19	4		2	16.67	37.95	36.06
20	5		1	33.33	48.77	44.61
21	6		2	0.00	43.84	42.47
4.						
.8						
22	1		1	0.00	10.00	10.12
23	2		1	33.33	14.31	14.32
24	3		1	100.00	51.67	46.71
25	4		1	33.33	19.58	19.52

26	5	(, /).	1	0.00	26.94	25.43
27	6	.	2	50.00	46.18	42.73
28	7	(- - , - -) , - -	1	33.33	9.03	7.67

: 8

6

		()		()	()	()
1.						
. 8						
1	1		1	0.00	10.00	10.12
2	2	.	1	0.00	14.31	14.32
3	3	.	1	100.00	51.67	46.71
4	4	.	1	0.00	19.58	19.52
5	5	(, /).	1	0.00	26.94	25.43
6	6	.	2	0.00	46.18	42.73
7	7	(- - , - -) , - -	1	0.00	9.03	7.67
2.						
. 8						
8	1		1	0.00	56.99	51.89
9	2		2	0.00	32.47	31.98
10	3		2	0.00	53.01	49.53
11	4		2	100.00	37.95	36.06
12	5		1	100.00	48.77	44.61
13	6		2	100.00	43.84	42.47
3.						
. 8						

14	1	« »	1	100.00	88.17	85.83
15	2	'	2	0.00	34.95	34.03
16	3	'	2	100.00	48.39	47.90
17	4		1	100.00	42.47	40.13
18	5	'	2	100.00	43.55	42.13
. 8						
19	1		2	0.00	46.91	45.50
20	2	'	1	0.00	15.55	14.73
21	3	'	2	0.00	36.96	35.49
22	4	/	2	0.00	44.35	39.89
23	5	'	1	0.00	64.25	62.28
4.						
. 8						
24	1		1	100.00	38.10	36.01
25	2	'	1	0.00	19.60	18.48
. 8						
26	1	'	1	100.00	56.26	48.86
27	2	'	2	100.00	35.35	32.25
28	3		2	50.00	16.44	18.83

: 8

7

		()		()	()	()
1.						
. 8						
1	1		2	66.67	42.82	38.71
2	2		2	50.00	41.83	37.64

3	3		1	66.67	60.28	51.95
4	4		2	50.00	35.07	33.60
5	5		2	50.00	50.28	47.82
6	6		2	66.67	45.07	41.89
2.						
.8						
7	1		1	66.67	28.42	26.16
8	2	()	1	66.67	35.20	34.17
.8						
9	1		1	0.00	35.33	34.40
10	2		2	0.00	13.51	13.65
11	3		2	0.00	1.77	3.15
3.						
.8						
12	1		1	33.33	10.00	10.12
13	2		1	33.33	14.31	14.32
14	3		1	66.67	51.67	46.71
15	4		1	33.33	19.58	19.52
16	5	(/)	1	66.67	26.94	25.43
17	6		2	16.67	46.18	42.73
18	7	(- -)	1	0.00	9.03	7.67
4.						
.8						
19	1	« »	1	100.00	88.17	85.83

20	2		2	66.67	34.95	34.03
21	3		2	50.00	48.39	47.90
22	4		1	33.33	42.47	40.13
23	5		2	33.33	43.55	42.13
.8						
24	1		2	66.67	46.91	45.50
25	2		2	33.33	15.55	14.73
26	3		2	16.67	36.96	35.49
27	4	/	2	0.00	44.35	39.89
28	5		1	0.00	64.25	62.28

: 8

8

		()		()	()	()
1.						
.8						
1	1	« »	2	25.00	32.94	32.76
2	2		2	0.00	15.87	15.64
3	3		2	100.00	37.30	30.23
4	4		2	50.00	28.84	27.10
2.						
.8						
5	1		1	100.00	56.35	52.29
6	2	-	1	100.00	81.76	79.39
7	3		1	100.00	70.54	65.02
8	4		1	50.00	58.92	51.76
9	5		1	50.00	60.54	58.71

10	6		2	0.00	35.74	33.85
11	7	(- -)	1	100.00	44.32	41.22
12	8		1	50.00	32.97	30.54
3.						
.8						
13	1		1	100.00	59.95	54.40
14	2		2	50.00	39.10	35.17
15	3		1	50.00	7.08	10.75
16	4		2	100.00	34.88	31.16
.8						
17	1		1	100.00	81.20	77.58
18	2		1	100.00	90.46	85.70
19	3		2	50.00	17.98	14.41
20	4		1	50.00	20.71	21.32
21	5		2	50.00	20.57	16.67
4.						
.8						
22	1		1	100.00	28.42	26.16
23	2	()	1	50.00	35.20	34.17
.8						
24	1		1	50.00	35.33	34.40
25	2		2	25.00	13.51	13.65
26	3		2	0.00	1.77	3.15

3.2.

1

8Б, Ученик №11

Вариант 1

		()			()	()	()
1.							
.8							
1	1		1	1	36.36	38.10	36.01
2	2		2	0	19.05	19.60	18.48
.8							
3	1		1	1	72.73	56.26	48.86
4	2		2	0	31.82	35.35	32.25
5	3		2	0	22.73	16.44	18.83
2.							
.8							
6	1		1	1	80.00	59.95	54.40
7	2		2	0	20.00	39.10	35.17
8	3		1	0	20.00	7.08	10.75
9	4		2	1	70.00	34.88	31.16
.8							
10	1		1	0	60.00	81.20	77.58
11	2		1	1	100.00	90.46	85.70
12	3		2	0	40.00	17.98	14.41
13	4		1	0	40.00	20.71	21.32
14	5		2	0	30.00	20.57	16.67

		()			()	()	()
3.							
.8							
15	1		1	0	33.33	56.35	52.29
16	2	-	1	1	66.67	81.76	79.39
17	3		1	1	66.67	70.54	65.02
18	4		1	1	66.67	58.92	51.76
19	5	-	1	1	58.33	60.54	58.71
20	6		2	0	20.83	35.74	33.85
21	7	(- -)	1	1	58.33	44.32	41.22
22	8		1	0	33.33	32.97	30.54
4.							
.8							
23	1	« ».	2	1	64.29	32.46	27.65
24	2		1	0	14.29	10.57	10.73
25	3	/	2	2	57.14	41.57	40.10
26	4		2	1	28.57	33.15	30.73
27	5		2	1	28.57	20.58	19.50

8А, Ученик №14

Вариант 1

		()			()	()	()
1.							
.8							
1	1		1	1	55.56	38.10	36.01
2	2		2	0	5.56	19.60	18.48

		()			()	()	()
.8							
3	1		1	0	44.44	56.26	48.86
4	2		2	2	33.33	35.35	32.25
5	3		2	0	11.11	16.44	18.83
2.							
.8							
6	1		1	1	100.00	59.95	54.40
7	2		2	1	50.00	39.10	35.17
8	3		1	0	0.00	7.08	10.75
9	4		2	0	0.00	34.88	31.16
.8							
10	1		1	1	100.00	81.20	77.58
11	2		1	1	100.00	90.46	85.70
12	3		2	1	50.00	17.98	14.41
13	4		1	1	100.00	20.71	21.32
14	5		2	0	0.00	20.57	16.67
3.							
.8							
15	1		1	1	100.00	56.35	52.29
16	2	-	1	1	100.00	81.76	79.39
17	3		1	0	33.33	70.54	65.02
18	4		1	1	100.00	58.92	51.76
19	5	-	1	1	100.00	60.54	58.71
20	6		2	0	66.67	35.74	33.85
21	7	(- -)	1	0	33.33	44.32	41.22

		()			()	()	()
22	8		1	1	66.67	32.97	30.54
4.							
.8							
23	1	« ».	2	0	25.00	32.46	27.65
24	2		1	0	0.00	10.57	10.73
25	3	/	2	0	0.00	41.57	40.10
26	4		2	0	25.00	33.15	30.73
27	5		2	1	25.00	20.58	19.50

8Б, Ученик №18

Вариант 1

		()			()	()	()
1.							
.8							
1	1		1	0	36.36	38.10	36.01
2	2		2	0	19.05	19.60	18.48
.8							
3	1		1	0	72.73	56.26	48.86
4	2		2	0	31.82	35.35	32.25
5	3		2	1	22.73	16.44	18.83
2.							
.8							
6	1		1	0	80.00	59.95	54.40
7	2		2	0	20.00	39.10	35.17
8	3		1	0	20.00	7.08	10.75
9	4		2	1	70.00	34.88	31.16
.8							

		()			()	()	()
10	1		1	0	60.00	81.20	77.58
11	2		1	1	100.00	90.46	85.70
12	3		2	2	40.00	17.98	14.41
13	4		1	1	40.00	20.71	21.32
14	5		2	0	30.00	20.57	16.67
3.							
.8							
15	1		1	0	33.33	56.35	52.29
16	2	-	1	0	66.67	81.76	79.39
17	3		1	0	66.67	70.54	65.02
18	4		1	1	66.67	58.92	51.76
19	5	-	1	0	58.33	60.54	58.71
20	6		2	0	20.83	35.74	33.85
21	7	(- -)	1	0	58.33	44.32	41.22
22	8		1	0	33.33	32.97	30.54
4.							
.8							
23	1	« ».	2	2	64.29	32.46	27.65
24	2		1	0	14.29	10.57	10.73
25	3	/	2	2	57.14	41.57	40.10
26	4		2	0	28.57	33.15	30.73
27	5		2	0	28.57	20.58	19.50

8Б, Ученик №23

Вариант 1

		()			()	()	()

		()			()	()	()
1.							
.8							
1	1		1	1	36.36	38.10	36.01
2	2		2	2	19.05	19.60	18.48
.8							
3	1		1	1	72.73	56.26	48.86
4	2		2	2	31.82	35.35	32.25
5	3		2	1	22.73	16.44	18.83
2.							
.8							
6	1		1	1	80.00	59.95	54.40
7	2		2	0	20.00	39.10	35.17
8	3		1	0	20.00	7.08	10.75
9	4		2	1	70.00	34.88	31.16
.8							
10	1		1	1	60.00	81.20	77.58
11	2		1	1	100.00	90.46	85.70
12	3		2	0	40.00	17.98	14.41
13	4		1	0	40.00	20.71	21.32
14	5		2	1	30.00	20.57	16.67
3.							
.8							
15	1		1	1	33.33	56.35	52.29
16	2	-	1	1	66.67	81.76	79.39
17	3		1	1	66.67	70.54	65.02
18	4		1	1	66.67	58.92	51.76

		()			()	()	()
19	5	-	1	1	58.33	60.54	58.71
20	6		2	1	20.83	35.74	33.85
21	7	(- -)	1	1	58.33	44.32	41.22
22	8		1	1	33.33	32.97	30.54
4.							
.8							
23	1	« ».	2	2	64.29	32.46	27.65
24	2		1	0	14.29	10.57	10.73
25	3	/	2	1	57.14	41.57	40.10
26	4		2	1	28.57	33.15	30.73
27	5		2	1	28.57	20.58	19.50

2

8Б, Ученик №9

Вариант 2

		()			()	()	()
1.							
.8							
1	1		1	0	33.33	56.35	52.29
2	2	-	1	1	66.67	81.76	79.39
3	3		1	1	66.67	70.54	65.02
4	4		1	1	66.67	58.92	51.76
5	5	-	1	1	58.33	60.54	58.71
6	6		2	1	20.83	35.74	33.85

		()			()	()	()
7	7	(- -)	1	1	58.33	44.32	41.22
8	8	,	1	1	33.33	32.97	30.54
2.							
.8							
9	1	« ».	2	1	64.29	32.46	27.65
10	2		1	0	14.29	10.57	10.73
11	3	/	2	0	57.14	41.57	40.10
12	4		2	0	28.57	33.15	30.73
13	5		2	1	28.57	20.58	19.50
3.							
.8							
14	1		1	1	36.36	38.10	36.01
15	2		2	1	19.05	19.60	18.48
.8							
16	1		1	1	72.73	56.26	48.86
17	2		2	0	31.82	35.35	32.25
18	3		2	2	22.73	16.44	18.83
4.							
.8							
19	1		2	0	28.57	18.33	15.79
20	2		1	0	57.14	67.78	68.28
21	3		2	1	35.71	38.61	37.11
22	4		1	1	28.57	30.28	28.37
23	5		1	0	71.43	31.39	28.77

		()			()	()	()
.8							
24	1		1.00	0.00	0.00	17.78	15.67
25	2		1.00	0.00	71.43	46.11	42.79
26	3		1.00	0	28.57	36.11	32.63
27	4		2.00	0	7.14	23.47	21.81
28	5		1.00	0.00	14.29	12.22	9.70

8Б, Ученик №15

Вариант 2

		()			()	()	()
1.							
.8							
1	1		1	1	33.33	56.35	52.29
2	2	-	1	1	66.67	81.76	79.39
3	3		1	1	66.67	70.54	65.02
4	4		1	1	66.67	58.92	51.76
5	5	-	1	1	58.33	60.54	58.71
6	6		2	0	20.83	35.74	33.85
7	7	(- -)	1	1	58.33	44.32	41.22
8	8		1	0	33.33	32.97	30.54
2.							
.8							
9	1	« ».	2	2	64.29	32.46	27.65
10	2		1	0	14.29	10.57	10.73
11	3	/	2	1	57.14	41.57	40.10
12	4		2	1	28.57	33.15	30.73

		()			()	()	()
13	5		2	0	28.57	20.58	19.50
3.							
.8							
14	1		1	0	36.36	38.10	36.01
15	2		2	0	19.05	19.60	18.48
.8							
16	1		1	0	72.73	56.26	48.86
17	2		2	1	31.82	35.35	32.25
18	3		2	0	22.73	16.44	18.83
4.							
.8							
19	1		2	0	28.57	18.33	15.79
20	2		1	1	57.14	67.78	68.28
21	3		2	1	35.71	38.61	37.11
22	4		1	0	28.57	30.28	28.37
23	5		1	1	71.43	31.39	28.77
.8							
24	1		1.00	0.00	0.00	17.78	15.67
25	2		1.00	1.00	71.43	46.11	42.79
26	3		1.00	1	28.57	36.11	32.63
27	4		2.00	1	7.14	23.47	21.81
28	5		1.00	0	14.29	12.22	9.70

8Б, Ученик №19

Вариант 2

		()			()	()	()
1.							

		()			()	()	()
.8							
1	1		1	0	33.33	56.35	52.29
2	2	-	1	1	66.67	81.76	79.39
3	3		1	1	66.67	70.54	65.02
4	4		1	1	66.67	58.92	51.76
5	5	-	1	0	58.33	60.54	58.71
6	6		2	0	20.83	35.74	33.85
7	7	(- -)	1	0	58.33	44.32	41.22
8	8		1	0	33.33	32.97	30.54
2.							
.8							
9	1	« ».	2	1	64.29	32.46	27.65
10	2		1	0	14.29	10.57	10.73
11	3	/	2	1	57.14	41.57	40.10
12	4		2	0	28.57	33.15	30.73
13	5		2	0	28.57	20.58	19.50
3.							
.8							
14	1		1	0	36.36	38.10	36.01
15	2		2	0	19.05	19.60	18.48
.8							
16	1		1	0	72.73	56.26	48.86
17	2		2	2	31.82	35.35	32.25
18	3		2	0	22.73	16.44	18.83
4.							

		()			()	()	()
. 8							
19	1		2	0	28.57	18.33	15.79
20	2		1	0	57.14	67.78	68.28
21	3		2	0	35.71	38.61	37.11
22	4		1	0	28.57	30.28	28.37
23	5		1	1	71.43	31.39	28.77
. 8							
24	1		1.00	0.00	0.00	17.78	15.67
25	2		1.00	1.00	71.43	46.11	42.79
26	3		1.00	0	28.57	36.11	32.63
27	4		2.00	0	7.14	23.47	21.81
28	5		1.00	1.00	14.29	12.22	9.70

8Б, Ученик №20

Вариант 2

		()			()	()	()
1.							
. 8							
1	1		1	0	33.33	56.35	52.29
2	2	-	1	1	66.67	81.76	79.39
3	3		1	0	66.67	70.54	65.02
4	4		1	0	66.67	58.92	51.76
5	5	-	1	1	58.33	60.54	58.71
6	6		2	1	20.83	35.74	33.85
7	7	(- -)	1	0	58.33	44.32	41.22
8	8		1	0	33.33	32.97	30.54

		()			()	()	()
2.							
.8							
9	1	« ».	2	0	64.29	32.46	27.65
10	2		1	1	14.29	10.57	10.73
11	3	/	2	1	57.14	41.57	40.10
12	4		2	1	28.57	33.15	30.73
13	5		2	1	28.57	20.58	19.50
3.							
.8							
14	1		1	0	36.36	38.10	36.01
15	2		2	0	19.05	19.60	18.48
.8							
16	1		1	1	72.73	56.26	48.86
17	2		2	0	31.82	35.35	32.25
18	3		2	0	22.73	16.44	18.83
4.							
.8							
19	1		2	0	28.57	18.33	15.79
20	2		1	1	57.14	67.78	68.28
21	3		2	1	35.71	38.61	37.11
22	4		1	0	28.57	30.28	28.37
23	5		1	0	71.43	31.39	28.77
.8							
24	1		1.00	0.00	0.00	17.78	15.67
25	2		1.00	0.00	71.43	46.11	42.79

		()			()	()	()
26	3		1.00	0	28.57	36.11	32.63
27	4		2.00	0	7.14	23.47	21.81
28	5		1.00	0.00	14.29	12.22	9.70

8А, Ученик №22

Вариант 2

		()			()	()	()
1.							
. 8							
1	1		1	1	100.00	56.35	52.29
2	2	-	1	1	100.00	81.76	79.39
3	3		1	1	33.33	70.54	65.02
4	4		1	1	100.00	58.92	51.76
5	5	-	1	1	100.00	60.54	58.71
6	6		2	2	66.67	35.74	33.85
7	7	(- -) , - -) , - -	1	0	33.33	44.32	41.22
8	8		1	0	66.67	32.97	30.54
2.							
. 8							
9	1	« ».	2	1	25.00	32.46	27.65
10	2		1	0	0.00	10.57	10.73
11	3	/	2	0	0.00	41.57	40.10
12	4		2	1	25.00	33.15	30.73
13	5		2	0	25.00	20.58	19.50
3.							
. 8							

		()			()	()	()
14	1		1	1	55.56	38.10	36.01
15	2		2	0	5.56	19.60	18.48
.8							
16	1		1	1	44.44	56.26	48.86
17	2		2	0	33.33	35.35	32.25
18	3		2	0	11.11	16.44	18.83
4.							
.8							
19	1		2	2	50.00	18.33	15.79
20	2		1	1	100.00	67.78	68.28
21	3		2	1	50.00	38.61	37.11
22	4		1	1	37.50	30.28	28.37
23	5		1	0	25.00	31.39	28.77
.8							
24	1		1.00	0.00	12.50	17.78	15.67
25	2		1.00	1.00	75.00	46.11	42.79
26	3		1.00	1	50.00	36.11	32.63
27	4		2.00	0	43.75	23.47	21.81
28	5		1.00	0	12.50	12.22	9.70

3

8Б, Ученик №1

Вариант 3

		()			()	()	()
1.							

		()			()	()	()
.8							
1	1		1	1	50.00	28.42	26.16
2	2	()	1	1	36.36	35.20	34.17
.8							
3	1		1	1	27.27	35.33	34.40
4	2		2	0	9.09	13.51	13.65
5	3		2	0	0.00	1.77	3.15
2.							
.8							
6	1		2	0	36.36	75.63	73.27
7	2		2	2	83.33	91.83	90.10
8	3		2	0	16.67	36.70	36.59
9	4		1	0	0.00	20.50	22.20
10	5		1	1	50.00	63.16	62.09
.8							
11	1		1	0	33.33	63.43	63.09
12	2		2	2	50.00	56.23	54.23
13	3		2	2	16.67	19.39	19.31
14	4		1	0	0.00	6.65	7.62
15	5		2	0	0.00	18.84	17.44
3.							
.8							
16	1	« »	2	1	30.00	32.94	32.76
17	2		2	0	0.00	15.87	15.64
18	3		2	2	60.00	37.30	30.23

		()			()	()	()
19	4		2	0	30.00	28.84	27.10
4.							
. 8							
20	1		1	0	33.33	56.35	52.29
21	2	-	1	0	66.67	81.76	79.39
22	3	,	1	1	66.67	70.54	65.02
23	4		1	1	66.67	58.92	51.76
24	5	-	1	1	58.33	60.54	58.71
25	6		2	2	20.83	35.74	33.85
26	7	(- -) , - -	1	1	58.33	44.32	41.22
27	8	,	1	1	33.33	32.97	30.54

8Б, Ученик №5

Вариант 3

		()			()	()	()
1.							
. 8							
1	1	,	1	1	50.00	28.42	26.16
2	2	() ,	1	0	36.36	35.20	34.17
. 8							
3	1	,	1	0	27.27	35.33	34.40
4	2	,	2	0	9.09	13.51	13.65
5	3	,	2	0	0.00	1.77	3.15

		()			()	()	()
2.							
. 8							
6	1		2	0	36.36	75.63	73.27
7	2		2	2	83.33	91.83	90.10
8	3		2	0	16.67	36.70	36.59
9	4		1	0	0.00	20.50	22.20
10	5		1	1	50.00	63.16	62.09
. 8							
11	1		1	0	33.33	63.43	63.09
12	2		2	0	50.00	56.23	54.23
13	3		2	0	16.67	19.39	19.31
14	4		1	0	0.00	6.65	7.62
15	5		2	0	0.00	18.84	17.44
3.							
. 8							
16	1	« »	2	0	30.00	32.94	32.76
17	2		2	0	0.00	15.87	15.64
18	3		2	0	60.00	37.30	30.23
19	4		2	0	30.00	28.84	27.10
4.							
. 8							
20	1		1	0	33.33	56.35	52.29
21	2	-	1	0	66.67	81.76	79.39
22	3		1	0	66.67	70.54	65.02
23	4		1	0	66.67	58.92	51.76
24	5	-	1	0	58.33	60.54	58.71
25	6		2	0	20.83	35.74	33.85

		()			()	()	()
26	7	(- -)	1	0	58.33	44.32	41.22
27	8	()	1	0	33.33	32.97	30.54

8Б, Ученик №7

Вариант 3

		()			()	()	()
1.							
.8							
1	1	()	2.00	0.00	50.00	28.42	26.16
2	2	()	1.00	0	36.36	35.20	34.17
.8							
3	1	()	1	0	27.27	35.33	34.40
4	2	()	2	0	9.09	13.51	13.65
5	3	()	2	0	0.00	1.77	3.15
2.							
?8							
6	1	()	1.00	0	36.36	75.63	73.27
7	2	()	2.00	0	83.33	91.83	90.10
8	3	()	2.00	0	16.67	36.70	36.59
9	4	()	1.00	0	0.00	20.50	22.20
10	5	()	1	0	50.00	63.16	62.09
.8							
11	1	()	1	0	33.33	63.43	63.09
12	2	()	2	0	50.00	56.23	54.23
13	3	()	2	0	16.67	19.39	19.31

		()			()	()	()
14	4		1	0	0.00	6.65	7.62
15	5		2	0	0.00	18.84	17.44
3.							
.8							
16	1	« »	2	1	30.00	32.94	32.76
17	2		2	0	0.00	15.87	15.64
18	3		2	0	60.00	37.30	30.23
19	4		2	1	30.00	28.84	27.10
4.							
.8							
20	1		1.00	0	33.33	56.35	52.29
21	2	-	1.00	0	66.67	81.76	79.39
22	3		1.00	0	66.67	70.54	65.02
23	4		1.00	0	66.67	58.92	51.76
24	5	-	1.00	0	58.33	60.54	58.71
25	6		2.00	0	20.83	35.74	33.85
26	7	(- -) , - -) , - -	1.00	0	58.33	44.32	41.22
27	8		1.00	0	33.33	32.97	30.54

8А, Ученик №7

Вариант 3

		()			()	()	()
1.							
.8							
1	1		1	1	54.55	28.42	26.16
2	2	() ,	1	0	54.55	35.20	34.17

		()			()	()	()
. 8							
3	1		1	1	45.45	35.33	34.40
4	2		2	0	31.82	13.51	13.65
5	3		2	0	4.55	1.77	3.15
2.							
. 8							
6	1		2	2	100.00	75.63	73.27
7	2		2	2	100.00	91.83	90.10
8	3		2	2	50.00	36.70	36.59
9	4		1	0	0.00	20.50	22.20
10	5		1	1	66.67	63.16	62.09
. 8							
11	1		1	1	100.00	63.43	63.09
12	2		2	1	83.33	56.23	54.23
13	3		2	0	16.67	19.39	19.31
14	4		1	1	33.33	6.65	7.62
15	5		2	0	16.67	18.84	17.44
3.							
. 8							
16	1	« »	2	2	100.00	32.94	32.76
17	2		2	1	50.00	15.87	15.64
18	3		2	2	100.00	37.30	30.23
19	4		2	1	50.00	28.84	27.10
4.							
. 8							

		()			()	()	()
20	1		1	1	100.00	56.35	52.29
21	2	-	1	1	100.00	81.76	79.39
22	3	,	1	0	33.33	70.54	65.02
23	4		1	1	100.00	58.92	51.76
24	5	-	1	1	100.00	60.54	58.71
25	6		2	2	66.67	35.74	33.85
26	7	(- - , - - , -)	1	1	33.33	44.32	41.22
27	8	,	1	1	66.67	32.97	30.54

4

8А, Ученик №1

Вариант 4

		()			()	()	()
1.							
.8							
1	1		2	2	50.00	18.33	15.79
2	2		1	1	100.00	67.78	68.28
3	3	,	2	1	50.00	38.61	37.11
4	4	,	1	0	37.50	30.28	28.37
5	5		1	0	25.00	31.39	28.77
.8							
6	1		1.00	0.00	12.50	17.78	15.67
7	2		1.00	1.00	75.00	46.11	42.79
8	3	,	1.00	1	50.00	36.11	32.63

		()			()	()	()
9	4		2.00	1	43.75	23.47	21.81
10	5		1.00	1.00	12.50	12.22	9.70
2.							
.8							
11	1		1	0	5.88	10.00	10.12
12	2		1	0	5.88	14.31	14.32
13	3		1	1	76.47	51.67	46.71
14	4		1	1	52.94	19.58	19.52
15	5	(/)	1	1	11.76	26.94	25.43
16	6		2	2	44.12	46.18	42.73
17	7	(- -)	1	0	0.00	9.03	7.67
3.							
.8							
18	1		1	1	54.55	28.42	26.16
19	2	()	1	1	54.55	35.20	34.17
.8							
20	1		1	1	45.45	35.33	34.40
21	2		2	0	31.82	13.51	13.65
22	3		2	1	4.55	1.77	3.15
4.							
.8							
23	1		2	2	75.00	42.82	38.71
24	2		2	2	70.00	41.83	37.64

		()			()	()	()
25	3		1	0	70.00	60.28	51.95
26	4		2	2	60.00	35.07	33.60
27	5		2	2	70.00	50.28	47.82
28	6		2	2	60.00	45.07	41.89

8А, Ученик №2

Вариант 4

		()			()	()	()
1.							
. 8							
1	1		2	0	50.00	18.33	15.79
2	2		1	1	100.00	67.78	68.28
3	3		2	0	50.00	38.61	37.11
4	4		1	0	37.50	30.28	28.37
5	5		1	1	25.00	31.39	28.77
. 8							
6	1		1.00	0.00	12.50	17.78	15.67
7	2		1.00	1.00	75.00	46.11	42.79
8	3		1.00	0	50.00	36.11	32.63
9	4		2.00	1	43.75	23.47	21.81
10	5		1.00	0	12.50	12.22	9.70
2.							
. 8							
11	1		1	1	5.88	10.00	10.12
12	2		1	0	5.88	14.31	14.32
13	3		1	1	76.47	51.67	46.71
14	4		1	1	52.94	19.58	19.52

		()			()	()	()
15	5	(, /)	1	0	11.76	26.94	25.43
16	6	.	2	0	44.12	46.18	42.73
17	7	(- -) , -	1	0	0.00	9.03	7.67
3.							
.8							
18	1	,	1	1	54.55	28.42	26.16
19	2	() ,	1	1	54.55	35.20	34.17
.8							
20	1	,	1	0	45.45	35.33	34.40
21	2	,	2	0	31.82	13.51	13.65
22	3	,	2	0	4.55	1.77	3.15
4.							
.8							
23	1		2	2	75.00	42.82	38.71
24	2		2	2	70.00	41.83	37.64
25	3		1	1	70.00	60.28	51.95
26	4		2	1	60.00	35.07	33.60
27	5		2	1	70.00	50.28	47.82
28	6		2	2	60.00	45.07	41.89

8Б, Ученик №2

Вариант 4

		()			()	()	()
1.							

		()			()	()	()
.8							
1	1		2	0	28.57	18.33	15.79
2	2		1	0	57.14	67.78	68.28
3	3		2	0	35.71	38.61	37.11
4	4		1	0	28.57	30.28	28.37
5	5		1	1	71.43	31.39	28.77
.8							
6	1		1.00	0.00	0.00	17.78	15.67
7	2		1.00	1.00	71.43	46.11	42.79
8	3		1.00	0	28.57	36.11	32.63
9	4		2.00	0	7.14	23.47	21.81
10	5		1.00	0	14.29	12.22	9.70
2.							
.8							
11	1		1	1	20.00	10.00	10.12
12	2		1	0	30.00	14.31	14.32
13	3		1	1	70.00	51.67	46.71
14	4		1	0	20.00	19.58	19.52
15	5	(/)	1	0	20.00	26.94	25.43
16	6		2	2	40.00	46.18	42.73
17	7	(- -)	1	0	10.00	9.03	7.67
3.							
.8							
18	1		1	0	50.00	28.42	26.16

		()			()	()	()
19	2	()	1	0	36.36	35.20	34.17
. 8							
20	1		1	0	27.27	35.33	34.40
21	2		2	0	9.09	13.51	13.65
22	3		2	0	0.00	1.77	3.15
4.							
. 8							
23	1		2	1	41.67	42.82	38.71
24	2		2	0	25.00	41.83	37.64
25	3		1	1	66.67	60.28	51.95
26	4		2	2	41.67	35.07	33.60
27	5		2	0	33.33	50.28	47.82
28	6		2	2	66.67	45.07	41.89

8А, Ученик №3

Вариант 4

		()			()	()	()
1.							
. 8							
1	1		2	0	50.00	18.33	15.79
2	2		1	1	100.00	67.78	68.28
3	3		2	1	50.00	38.61	37.11
4	4		1	1	37.50	30.28	28.37
5	5		1	0	25.00	31.39	28.77
. 8							

		()			()	()	()
6	1		1.00	1.00	12.50	17.78	15.67
7	2		1.00	1.00	75.00	46.11	42.79
8	3		1.00	1	50.00	36.11	32.63
9	4		2.00	0	43.75	23.47	21.81
10	5		1.00	0	12.50	12.22	9.70
2.							
.8							
11	1		1	0	5.88	10.00	10.12
12	2		1	0	5.88	14.31	14.32
13	3		1	1	76.47	51.67	46.71
14	4		1	0	52.94	19.58	19.52
15	5	(/)	1	0	11.76	26.94	25.43
16	6		2	0	44.12	46.18	42.73
17	7	(- -)	1	0	0.00	9.03	7.67
3.							
.8							
18	1		1	0	54.55	28.42	26.16
19	2	()	1	0	54.55	35.20	34.17
.8							
20	1		1	0	45.45	35.33	34.40
21	2		2	1	31.82	13.51	13.65
22	3		2	0	4.55	1.77	3.15

		()			()	()	()
4.							
. 8							
23	1		2	2	75.00	42.82	38.71
24	2		2	2	70.00	41.83	37.64
25	3		1	1	70.00	60.28	51.95
26	4		2	2	60.00	35.07	33.60
27	5		2	1	70.00	50.28	47.82
28	6		2	2	60.00	45.07	41.89

8А, Ученик №4

Вариант 4

		()			()	()	()
1.							
. 8							
1	1		2	2	50.00	18.33	15.79
2	2		1	1	100.00	67.78	68.28
3	3		2	1	50.00	38.61	37.11
4	4		1	0	37.50	30.28	28.37
5	5		1	0	25.00	31.39	28.77
. 8							
6	1		1.00	0.00	12.50	17.78	15.67
7	2		1.00	0.00	75.00	46.11	42.79
8	3		1.00	0	50.00	36.11	32.63
9	4		2.00	1	43.75	23.47	21.81
10	5		1.00	0	12.50	12.22	9.70
2.							
. 8							

		()			()	()	()
11	1		1	0	5.88	10.00	10.12
12	2		1	0	5.88	14.31	14.32
13	3		1	1	76.47	51.67	46.71
14	4		1	1	52.94	19.58	19.52
15	5	(/)	1	0	11.76	26.94	25.43
16	6		2	2	44.12	46.18	42.73
17	7	(- -)	1	0	0.00	9.03	7.67
3.							
.8							
18	1		1	1	54.55	28.42	26.16
19	2	()	1	0	54.55	35.20	34.17
.8							
20	1		1	0	45.45	35.33	34.40
21	2		2	2	31.82	13.51	13.65
22	3		2	0	4.55	1.77	3.15
4.							
.8							
23	1		2	2	75.00	42.82	38.71
24	2		2	2	70.00	41.83	37.64
25	3		1	1	70.00	60.28	51.95
26	4		2	2	60.00	35.07	33.60
27	5		2	2	70.00	50.28	47.82
28	6		2	2	60.00	45.07	41.89

8Б, Ученик №6

Вариант 4

		()			()	()	()
1.							
.8							
1	1		2	2	28.57	18.33	15.79
2	2		1	1	57.14	67.78	68.28
3	3		2	1	35.71	38.61	37.11
4	4		1	1	28.57	30.28	28.37
5	5		1	1	71.43	31.39	28.77
.8							
6	1		1.00	0.00	0.00	17.78	15.67
7	2		1.00	1.00	71.43	46.11	42.79
8	3		1.00	1	28.57	36.11	32.63
9	4		2.00	0	7.14	23.47	21.81
10	5		1.00	0.00	14.29	12.22	9.70
2.							
.8							
11	1		1	0	20.00	10.00	10.12
12	2		1	1	30.00	14.31	14.32
13	3		1	0	70.00	51.67	46.71
14	4		1	0	20.00	19.58	19.52
15	5	(/)	1	0	20.00	26.94	25.43
16	6		2	2	40.00	46.18	42.73
17	7	(- -)	1	0	10.00	9.03	7.67
3.							

		()			()	()	()
.8							
18	1		1	0	50.00	28.42	26.16
19	2	()	1	0	36.36	35.20	34.17
.8							
20	1		1	1	27.27	35.33	34.40
21	2		2	1	9.09	13.51	13.65
22	3		2	0	0.00	1.77	3.15
4.							
.8							
23	1		2	0	41.67	42.82	38.71
24	2		2	0	25.00	41.83	37.64
25	3		1	1	66.67	60.28	51.95
26	4		2	0	41.67	35.07	33.60
27	5		2	0	33.33	50.28	47.82
28	6		2	1	66.67	45.07	41.89

8А, Ученик №10

Вариант 4

		()			()	()	()
1.							
.8							
1	1		2	0	50.00	18.33	15.79
2	2		1	1	100.00	67.78	68.28
3	3		2	1	50.00	38.61	37.11
4	4		1	1	37.50	30.28	28.37

		()			()	()	()
5	5		1	1	25.00	31.39	28.77
.8							
6	1		1.00	0.00	12.50	17.78	15.67
7	2		1.00	1.00	75.00	46.11	42.79
8	3		1.00	0	50.00	36.11	32.63
9	4		2.00	1	43.75	23.47	21.81
10	5		1.00	0	12.50	12.22	9.70
2.							
.8							
11	1		1	0	5.88	10.00	10.12
12	2		1	0	5.88	14.31	14.32
13	3		1	1	76.47	51.67	46.71
14	4		1	0	52.94	19.58	19.52
15	5	(/)	1	0	11.76	26.94	25.43
16	6		2	0	44.12	46.18	42.73
17	7	(- -)	1	0	0.00	9.03	7.67
3.							
.8							
18	1		1	1	54.55	28.42	26.16
19	2	()	1	1	54.55	35.20	34.17
.8							
20	1		1	1	45.45	35.33	34.40
21	2		2	1	31.82	13.51	13.65

		()			()	()	()
22	3		2	0	4.55	1.77	3.15
4.							
. 8							
23	1		2	0	75.00	42.82	38.71
24	2		2	1	70.00	41.83	37.64
25	3		1	1	70.00	60.28	51.95
26	4		2	2	60.00	35.07	33.60
27	5		2	2	70.00	50.28	47.82
28	6		2	0	60.00	45.07	41.89

8А, Ученик №17

Вариант 4

		()			()	()	()
1.							
. 8							
1	1		2	2	50.00	18.33	15.79
2	2		1	1	100.00	67.78	68.28
3	3		2	2	50.00	38.61	37.11
4	4		1	0	37.50	30.28	28.37
5	5		1	0	25.00	31.39	28.77
. 8							
6	1		1.00	0.00	12.50	17.78	15.67
7	2		1.00	1.00	75.00	46.11	42.79
8	3		1.00	0	50.00	36.11	32.63
9	4		2.00	2	43.75	23.47	21.81
10	5		1.00	0	12.50	12.22	9.70

		()			()	()	()
2.							
.8							
11	1		1	0	5.88	10.00	10.12
12	2		1	0	5.88	14.31	14.32
13	3		1	1	76.47	51.67	46.71
14	4		1	1	52.94	19.58	19.52
15	5	(/)	1	0	11.76	26.94	25.43
16	6		2	2	44.12	46.18	42.73
17	7	(- -)	1	0	0.00	9.03	7.67
3.							
.8							
18	1		1	1	54.55	28.42	26.16
19	2	()	1	1	54.55	35.20	34.17
.8							
20	1		1	1	45.45	35.33	34.40
21	2		2	1	31.82	13.51	13.65
22	3		2	0	4.55	1.77	3.15
4.							
.8							
23	1		2	2	75.00	42.82	38.71
24	2		2	0	70.00	41.83	37.64
25	3		1	1	70.00	60.28	51.95
26	4		2	0	60.00	35.07	33.60

		()			()	()	()
27	5		2	1	70.00	50.28	47.82
28	6		2	0	60.00	45.07	41.89

8А, Ученик №18

Вариант 4

		()			()	()	()
1.							
.8							
1	1		2	0	50.00	18.33	15.79
2	2		1	1	100.00	67.78	68.28
3	3		2	1	50.00	38.61	37.11
4	4		1	0	37.50	30.28	28.37
5	5		1	0	25.00	31.39	28.77
.8							
6	1		1.00	0.00	12.50	17.78	15.67
7	2		1.00	0.00	75.00	46.11	42.79
8	3		1.00	1	50.00	36.11	32.63
9	4		2.00	1	43.75	23.47	21.81
10	5		1.00	0	12.50	12.22	9.70
2.							
.8							
11	1		1	0	5.88	10.00	10.12
12	2		1	0	5.88	14.31	14.32
13	3		1	1	76.47	51.67	46.71
14	4		1	1	52.94	19.58	19.52
15	5	(/)	1	0	11.76	26.94	25.43
16	6		2	1	44.12	46.18	42.73

		()			()	()	()
17	7	(- -)	1	0	0.00	9.03	7.67
3.							
.8							
18	1		1	0	54.55	28.42	26.16
19	2	()	1	0	54.55	35.20	34.17
.8							
20	1		1	1	45.45	35.33	34.40
21	2		2	1	31.82	13.51	13.65
22	3		2	0	4.55	1.77	3.15
4.							
.8							
23	1		2	2	75.00	42.82	38.71
24	2		2	2	70.00	41.83	37.64
25	3		1	1	70.00	60.28	51.95
26	4		2	1	60.00	35.07	33.60
27	5		2	1	70.00	50.28	47.82
28	6		2	2	60.00	45.07	41.89

8Б, Ученик №22

Вариант 4

		()			()	()	()
1.							
.8							
1	1		2	2	28.57	18.33	15.79

		()			()	()	()
2	2		1	1	57.14	67.78	68.28
3	3		2	1	35.71	38.61	37.11
4	4		1	0	28.57	30.28	28.37
5	5		1	1	71.43	31.39	28.77
.8							
6	1		1.00	0.00	0.00	17.78	15.67
7	2		1.00	1.00	71.43	46.11	42.79
8	3		1.00	0	28.57	36.11	32.63
9	4		2.00	0	7.14	23.47	21.81
10	5		1.00	0	14.29	12.22	9.70
2.							
.8							
11	1		1	0	20.00	10.00	10.12
12	2		1	0	30.00	14.31	14.32
13	3		1	0	70.00	51.67	46.71
14	4		1	0	20.00	19.58	19.52
15	5	(/)	1	0	20.00	26.94	25.43
16	6		2	0	40.00	46.18	42.73
17	7	(- -)	1	0	10.00	9.03	7.67
3.							
.8							
18	1		1	0	50.00	28.42	26.16
19	2	()	1	0	36.36	35.20	34.17
.8							

		()			()	()	()
20	1		1	0	27.27	35.33	34.40
21	2		2	0	9.09	13.51	13.65
22	3		2	0	0.00	1.77	3.15
4.							
. 8							
23	1		2	0	41.67	42.82	38.71
24	2		2	0	25.00	41.83	37.64
25	3		1	0	66.67	60.28	51.95
26	4		2	0	41.67	35.07	33.60
27	5		2	1	33.33	50.28	47.82
28	6		2	1	66.67	45.07	41.89

5

8А, Ученик №6

Вариант 5

		()			()	()	()
1.							
? 8							
1	1		2	2	100.00	75.63	73.27
2	2		2	2	100.00	91.83	90.10
3	3		2	1	50.00	36.70	36.59
4	4		1	0	0.00	20.50	22.20
5	5		1	0	66.67	63.16	62.09
. 8							
6	1		1	1	100.00	63.43	63.09

		()			()	()	()
7	2		2	2	83.33	56.23	54.23
8	3		2	0	16.67	19.39	19.31
9	4		1	0	33.33	6.65	7.62
10	5		2	1	16.67	18.84	17.44
2.							
.8							
11	1		1	0	55.56	38.10	36.01
12	2		2	0	5.56	19.60	18.48
.8							
13	1		1	0	44.44	56.26	48.86
14	2		2	0	33.33	35.35	32.25
15	3		2	0	11.11	16.44	18.83
3.							
.8							
16	1		1	1	28.57	56.99	51.89
17	2		2	0	28.57	32.47	31.98
18	3		2	2	50.00	53.01	49.53
19	4		2	2	50.00	37.95	36.06
20	5		1	1	85.71	48.77	44.61
21	6		2	2	71.43	43.84	42.47
4.							
.8							
22	1		1	0	5.88	10.00	10.12
23	2		1	0	5.88	14.31	14.32
24	3		1	1	76.47	51.67	46.71
25	4		1	1	52.94	19.58	19.52
26	5	(/)	1	0	11.76	26.94	25.43

		()			()	()	()
27	6		2	2	44.12	46.18	42.73
28	7	(- -)	1	0	0.00	9.03	7.67

8А, Ученик №15

Вариант 5

		()			()	()	()
1.							
. 8							
1	1		2	2	100.00	75.63	73.27
2	2		2	2	100.00	91.83	90.10
3	3		2	0	50.00	36.70	36.59
4	4		1	0	0.00	20.50	22.20
5	5		1	1	66.67	63.16	62.09
. 8							
6	1		1	1	100.00	63.43	63.09
7	2		2	2	83.33	56.23	54.23
8	3		2	1	16.67	19.39	19.31
9	4		1	0	33.33	6.65	7.62
10	5		2	0	16.67	18.84	17.44
2.							
. 8							
11	1		1	1	55.56	38.10	36.01
12	2		2	0	5.56	19.60	18.48
. 8							
13	1		1	1	44.44	56.26	48.86
14	2		2	0	33.33	35.35	32.25
15	3		2	0	11.11	16.44	18.83

		()			()	()	()
3.							
. 8							
16	1		1	0	28.57	56.99	51.89
17	2		2	0	28.57	32.47	31.98
18	3		2	0	50.00	53.01	49.53
19	4		2	0	50.00	37.95	36.06
20	5		1	1	85.71	48.77	44.61
21	6		2	0	71.43	43.84	42.47
4.							
. 8							
22	1		1	0	5.88	10.00	10.12
23	2		1	0	5.88	14.31	14.32
24	3		1	0	76.47	51.67	46.71
25	4		1	1	52.94	19.58	19.52
26	5	(/)	1	0	11.76	26.94	25.43
27	6		2	0	44.12	46.18	42.73
28	7	(- -)	1	0	0.00	9.03	7.67

8Б, Ученик №16

Вариант 5

		()			()	()	()
1.							
? 8							
1	1		2	2	36.36	75.63	73.27
2	2		2	2	83.33	91.83	90.10
3	3		2	0	16.67	36.70	36.59
4	4		1	0	0.00	20.50	22.20

		()			()	()	()
5	5		1	0	50.00	63.16	62.09
.8							
6	1		1	1	33.33	63.43	63.09
7	2		2	2	50.00	56.23	54.23
8	3		2	0	16.67	19.39	19.31
9	4		1	0	0.00	6.65	7.62
10	5		2	0	0.00	18.84	17.44
2.							
.8							
11	1		1	0	36.36	38.10	36.01
12	2		2	0	19.05	19.60	18.48
.8							
13	1		1	1	72.73	56.26	48.86
14	2		2	0	31.82	35.35	32.25
15	3		2	0	22.73	16.44	18.83
3.							
.8							
16	1		1	1	75.00	56.99	51.89
17	2		2	0	25.00	32.47	31.98
18	3		2	2	62.50	53.01	49.53
19	4		2	0	37.50	37.95	36.06
20	5		1	0	50.00	48.77	44.61
21	6		2	0	25.00	43.84	42.47
4.							
.8							
22	1		1	0	20.00	10.00	10.12
23	2		1	0	30.00	14.31	14.32

		()			()	()	()
24	3		1	1	70.00	51.67	46.71
25	4		1	0	20.00	19.58	19.52
26	5	(/)	1	0	20.00	26.94	25.43
27	6		2	2	40.00	46.18	42.73
28	7	(- -)	1	0	10.00	9.03	7.67

8Б, Ученик №17

Вариант 5

		()			()	()	()
1.							
? 8							
1	1		2	0	36.36	75.63	73.27
2	2		2	2	83.33	91.83	90.10
3	3		2	1	16.67	36.70	36.59
4	4		1	0	0.00	20.50	22.20
5	5		1	0	50.00	63.16	62.09
. 8							
6	1		1	1	33.33	63.43	63.09
7	2		2	2	50.00	56.23	54.23
8	3		2	0	16.67	19.39	19.31
9	4		1	0	0.00	6.65	7.62
10	5		2	0	0.00	18.84	17.44
2.							
. 8							
11	1		1	0	36.36	38.10	36.01
12	2		2	0	19.05	19.60	18.48
. 8							

		()			()	()	()
13	1		1	1	72.73	56.26	48.86
14	2		2	0	31.82	35.35	32.25
15	3		2	0	22.73	16.44	18.83
3.							
. 8							
16	1		1	1	75.00	56.99	51.89
17	2		2	1	25.00	32.47	31.98
18	3		2	1	62.50	53.01	49.53
19	4		2	0	37.50	37.95	36.06
20	5		1	0	50.00	48.77	44.61
21	6		2	0	25.00	43.84	42.47
4.							
. 8							
22	1		1	0	20.00	10.00	10.12
23	2		1	1	30.00	14.31	14.32
24	3		1	1	70.00	51.67	46.71
25	4		1	0	20.00	19.58	19.52
26	5	(/)	1	0	20.00	26.94	25.43
27	6		2	1	40.00	46.18	42.73
28	7	(- -)	1	1	10.00	9.03	7.67

8Б, Ученик №21

Вариант 5

		()			()	()	()
1.							
? 8							
1	1		2	2	36.36	75.63	73.27

		()			()	()	()
2	2		2	2	83.33	91.83	90.10
3	3		2	1	16.67	36.70	36.59
4	4		1	0	0.00	20.50	22.20
5	5		1	1	50.00	63.16	62.09
.8							
6	1		1	0	33.33	63.43	63.09
7	2		2	0	50.00	56.23	54.23
8	3		2	0	16.67	19.39	19.31
9	4		1	0	0.00	6.65	7.62
10	5		2	0	0.00	18.84	17.44
2.							
.8							
11	1		1	0	36.36	38.10	36.01
12	2		2	1	19.05	19.60	18.48
.8							
13	1		1	1	72.73	56.26	48.86
14	2		2	0	31.82	35.35	32.25
15	3		2	0	22.73	16.44	18.83
3.							
.8							
16	1		1	1	75.00	56.99	51.89
17	2		2	1	25.00	32.47	31.98
18	3		2	2	62.50	53.01	49.53
19	4		2	1	37.50	37.95	36.06
20	5		1	1	50.00	48.77	44.61
21	6		2	0	25.00	43.84	42.47
4.							

		()			()	()	()
.8							
22	1		1	0	20.00	10.00	10.12
23	2		1	0	30.00	14.31	14.32
24	3		1	1	70.00	51.67	46.71
25	4		1	1	20.00	19.58	19.52
26	5	(/)	1	0	20.00	26.94	25.43
27	6		2	0	40.00	46.18	42.73
28	7	(- -)	1	0	10.00	9.03	7.67

6

8А, Ученик №5

Вариант 6

		()			()	()	()
1.							
.8							
1	1		1	0	5.88	10.00	10.12
2	2		1	0	5.88	14.31	14.32
3	3		1	1	76.47	51.67	46.71
4	4		1	0	52.94	19.58	19.52
5	5	(/)	1	0	11.76	26.94	25.43
6	6		2	0	44.12	46.18	42.73
7	7	(- -)	1	0	0.00	9.03	7.67
2.							
.8							

		()			()	()	()
8	1		1	0	28.57	56.99	51.89
9	2		2	1	28.57	32.47	31.98
10	3		2	1	50.00	53.01	49.53
11	4		2	0	50.00	37.95	36.06
12	5		1	1	85.71	48.77	44.61
13	6		2	2	71.43	43.84	42.47
3.							
.8							
14	1	« »	1	0	62.50	88.17	85.83
15	2		2	0	31.25	34.95	34.03
16	3		2	0	37.50	48.39	47.90
17	4		1	1	50.00	42.47	40.13
18	5		2	1	50.00	43.55	42.13
.8							
19	1		2	0	43.75	46.91	45.50
20	2		2	0	18.75	15.55	14.73
21	3		2	1	25.00	36.96	35.49
22	4		2	2	50.00	44.35	39.89
23	5		1	1	87.50	64.25	62.28
4.							
.8							
24	1		1	0	55.56	38.10	36.01
25	2		2	0	5.56	19.60	18.48
.8							
26	1		1	1	44.44	56.26	48.86
27	2		2	0	33.33	35.35	32.25

		()			()	()	()
28	3		2	1	11.11	16.44	18.83

8А, Ученик №9

Вариант 6

		()			()	()	()
1.							
.8							
1	1		1	0	5.88	10.00	10.12
2	2		1	0	5.88	14.31	14.32
3	3		1	1	76.47	51.67	46.71
4	4		1	1	52.94	19.58	19.52
5	5	(/)	1	0	11.76	26.94	25.43
6	6		2	2	44.12	46.18	42.73
7	7	(- -)	1	0	0.00	9.03	7.67
2.							
.8							
8	1		1	0	28.57	56.99	51.89
9	2		2	1	28.57	32.47	31.98
10	3		2	1	50.00	53.01	49.53
11	4		2	1	50.00	37.95	36.06
12	5		1	1	85.71	48.77	44.61
13	6		2	2	71.43	43.84	42.47
3.							
.8							
14	1	« »	1	1	62.50	88.17	85.83
15	2		2	0	31.25	34.95	34.03
16	3		2	2	37.50	48.39	47.90

		()			()	()	()
17	4		1	0	50.00	42.47	40.13
18	5		2	1	50.00	43.55	42.13
.8							
19	1		2	0	43.75	46.91	45.50
20	2		2	1	18.75	15.55	14.73
21	3		2	1	25.00	36.96	35.49
22	4	/	2	1	50.00	44.35	39.89
23	5		1	1	87.50	64.25	62.28
4.							
.8							
24	1		1	0	55.56	38.10	36.01
25	2		2	0	5.56	19.60	18.48
.8							
26	1		1	0	44.44	56.26	48.86
27	2		2	2	33.33	35.35	32.25
28	3		2	0	11.11	16.44	18.83

8А, Ученик №11

Вариант 6

		()			()	()	()
1.							
.8							
1	1		1	0	5.88	10.00	10.12
2	2		1	0	5.88	14.31	14.32
3	3		1	1	76.47	51.67	46.71
4	4		1	0	52.94	19.58	19.52
5	5	(/)	1	0	11.76	26.94	25.43

		()			()	()	()
6	6		2	2	44.12	46.18	42.73
7	7	(- -)	1	0	0.00	9.03	7.67
2.							
.8							
8	1		1	0	28.57	56.99	51.89
9	2		2	2	28.57	32.47	31.98
10	3		2	1	50.00	53.01	49.53
11	4		2	1	50.00	37.95	36.06
12	5		1	0	85.71	48.77	44.61
13	6		2	0	71.43	43.84	42.47
3.							
.8							
14	1	« »	1	1	62.50	88.17	85.83
15	2		2	0	31.25	34.95	34.03
16	3		2	1	37.50	48.39	47.90
17	4		1	0	50.00	42.47	40.13
18	5		2	1	50.00	43.55	42.13
.8							
19	1		2	2	43.75	46.91	45.50
20	2		2	0	18.75	15.55	14.73
21	3		2	0	25.00	36.96	35.49
22	4	/	2	2	50.00	44.35	39.89
23	5		1	1	87.50	64.25	62.28
4.							
.8							

		()			()	()	()
24	1		1	0	55.56	38.10	36.01
25	2		2	0	5.56	19.60	18.48
.8							
26	1		1	0	44.44	56.26	48.86
27	2		2	0	33.33	35.35	32.25
28	3		2	1	11.11	16.44	18.83

8А, Ученик №12

Вариант 6

		()			()	()	()
1.							
.8							
1	1		1	0	5.88	10.00	10.12
2	2		1	0	5.88	14.31	14.32
3	3		1	0	76.47	51.67	46.71
4	4		1	0	52.94	19.58	19.52
5	5	(/)	1	1	11.76	26.94	25.43
6	6		2	0	44.12	46.18	42.73
7	7	(- -)	1	0	0.00	9.03	7.67
2.							
.8							
8	1		1	1	28.57	56.99	51.89
9	2		2	0	28.57	32.47	31.98
10	3		2	2	50.00	53.01	49.53
11	4		2	2	50.00	37.95	36.06
12	5		1	1	85.71	48.77	44.61
13	6		2	2	71.43	43.84	42.47

		()			()	()	()
3.							
.8							
14	1	« »	1	0	62.50	88.17	85.83
15	2	'	2	1	31.25	34.95	34.03
16	3	'	2	1	37.50	48.39	47.90
17	4		1	1	50.00	42.47	40.13
18	5	'	2	2	50.00	43.55	42.13
.8							
19	1		2	1	43.75	46.91	45.50
20	2	'	2	2	18.75	15.55	14.73
21	3	'	2	1	25.00	36.96	35.49
22	4	/	2	2	50.00	44.35	39.89
23	5	'	1	1	87.50	64.25	62.28
4.							
.8							
24	1		1	1	55.56	38.10	36.01
25	2	'	2	0	5.56	19.60	18.48
.8							
26	1	'	1	1	44.44	56.26	48.86
27	2	'	2	0	33.33	35.35	32.25
28	3		2	0	11.11	16.44	18.83

8Б, Ученик №12

Вариант 6

		()			()	()	()
1.							

		()			()	()	()
.8							
1	1		1	0	20.00	10.00	10.12
2	2		1	0	30.00	14.31	14.32
3	3		1	1	70.00	51.67	46.71
4	4		1	0	20.00	19.58	19.52
5	5	(/)	1	0	20.00	26.94	25.43
6	6		2	0	40.00	46.18	42.73
7	7	(- -)	1	0	10.00	9.03	7.67
2.							
.8							
8	1		1	0	75.00	56.99	51.89
9	2		2	0	25.00	32.47	31.98
10	3		2	0	62.50	53.01	49.53
11	4		2	2	37.50	37.95	36.06
12	5		1	1	50.00	48.77	44.61
13	6		2	2	25.00	43.84	42.47
3.							
.8							
14	1	« »	1	1	100.00	88.17	85.83
15	2		2	0	50.00	34.95	34.03
16	3		2	2	62.50	48.39	47.90
17	4		1	1	50.00	42.47	40.13
18	5		2	2	50.00	43.55	42.13
.8							
19	1		2.00	0	50.00	46.91	45.50

		()			()	()	()
20	2		1.00	0	28.57	15.55	14.73
21	3		2.00	0	12.50	36.96	35.49
22	4	/	2.00	0	0.00	44.35	39.89
23	5		1.00	0	0.00	64.25	62.28
4.							
.8							
24	1		1	1	36.36	38.10	36.01
25	2		1	0	19.05	19.60	18.48
.8							
26	1		1.00	1	72.73	56.26	48.86
27	2		2.00	2.00	31.82	35.35	32.25
28	3		2.00	1	22.73	16.44	18.83

8А, Ученик №19

Вариант 6

		()			()	()	()
1.							
.8							
1	1		1	0	5.88	10.00	10.12
2	2		1	0	5.88	14.31	14.32
3	3		1	0	76.47	51.67	46.71
4	4		1	0	52.94	19.58	19.52
5	5	(/)	1	0	11.76	26.94	25.43
6	6		2	2	44.12	46.18	42.73
7	7	(- -)	1	0	0.00	9.03	7.67
2.							

		()			()	()	()
.8							
8	1		1	0	28.57	56.99	51.89
9	2		2	0	28.57	32.47	31.98
10	3		2	0	50.00	53.01	49.53
11	4		2	1	50.00	37.95	36.06
12	5		1	1	85.71	48.77	44.61
13	6		2	2	71.43	43.84	42.47
3.							
.8							
14	1	« »	1	1	62.50	88.17	85.83
15	2		2	1	31.25	34.95	34.03
16	3		2	0	37.50	48.39	47.90
17	4		1	0	50.00	42.47	40.13
18	5		2	1	50.00	43.55	42.13
.8							
19	1		2	1	43.75	46.91	45.50
20	2		2	0	18.75	15.55	14.73
21	3		2	0	25.00	36.96	35.49
22	4	/	2	0	50.00	44.35	39.89
23	5		1	1	87.50	64.25	62.28
4.							
.8							
24	1		1	1	55.56	38.10	36.01
25	2		2	1	5.56	19.60	18.48
.8							
26	1		1	0	44.44	56.26	48.86

		()			()	()	()
27	2		2	2	33.33	35.35	32.25
28	3		2	0	11.11	16.44	18.83

7

8Б, Ученик №8

Вариант 7

		()			()	()	()
1.							
.8							
1	1		2	2	41.67	42.82	38.71
2	2		2	2	25.00	41.83	37.64
3	3		1	1	66.67	60.28	51.95
4	4		2	1	41.67	35.07	33.60
5	5		2	1	33.33	50.28	47.82
6	6		2	2	66.67	45.07	41.89
2.							
.8							
7	1		1	1	50.00	28.42	26.16
8	2	()	1	0	36.36	35.20	34.17
.8							
9	1		1	0	27.27	35.33	34.40
10	2		2	0	9.09	13.51	13.65
11	3		2	0	0.00	1.77	3.15

		()			()	()	()
3.							
.8							
12	1		1	1	20.00	10.00	10.12
13	2		1	1	30.00	14.31	14.32
14	3		1	1	70.00	51.67	46.71
15	4		1	0	20.00	19.58	19.52
16	5	(/)	1	1	20.00	26.94	25.43
17	6		2	1	40.00	46.18	42.73
18	7	(- -)	1	0	10.00	9.03	7.67
4.							
.8							
19	1	« »	1	1	100.00	88.17	85.83
20	2		2	2	50.00	34.95	34.03
21	3		2	1	62.50	48.39	47.90
22	4		1	1	50.00	42.47	40.13
23	5		2	2	50.00	43.55	42.13
.8							
24	1		2	2	50.00	46.91	45.50
25	2		2	1	28.57	15.55	14.73
26	3		2	0	12.50	36.96	35.49
27	4	/	2	0	0.00	44.35	39.89
28	5		1	0	0.00	64.25	62.28

8А, Ученик №8

Вариант 7

		()			()	()	()
--	--	-----	--	--	-----	-----	-----

		()			()	()	()
1.							
.8							
1	1		2	2	75.00	42.82	38.71
2	2		2	1	70.00	41.83	37.64
3	3		1	0	70.00	60.28	51.95
4	4		2	2	60.00	35.07	33.60
5	5		2	2	70.00	50.28	47.82
6	6		2	0	60.00	45.07	41.89
2.							
.8							
7	1		1	0	54.55	28.42	26.16
8	2	()	1	0	54.55	35.20	34.17
.8							
9	1		1	0	45.45	35.33	34.40
10	2		2	0	31.82	13.51	13.65
11	3		2	0	4.55	1.77	3.15
3.							
.8							
12	1		1	0	5.88	10.00	10.12
13	2		1	0	5.88	14.31	14.32
14	3		1	0	76.47	51.67	46.71
15	4		1	0	52.94	19.58	19.52
16	5	(/)	1	0	11.76	26.94	25.43
17	6		2	0	44.12	46.18	42.73

		()			()	()	()
18	7	(- -)	1	0	0.00	9.03	7.67
4.							
. 8							
19	1	« »	1	1	62.50	88.17	85.83
20	2	'	2	2	31.25	34.95	34.03
21	3	'	2	1	37.50	48.39	47.90
22	4		1	1	50.00	42.47	40.13
23	5	'	2	0	50.00	43.55	42.13
. 8							
24	1		2	2	43.75	46.91	45.50
25	2	'	2	0	18.75	15.55	14.73
26	3	'	2	1	25.00	36.96	35.49
27	4	/	2	0	50.00	44.35	39.89
28	5	-	1	1	87.50	64.25	62.28

8Б, Ученик №10

Вариант 7

		()			()	()	()
1.							
. 8							
1	1		2	2	41.67	42.82	38.71
2	2		2	1	25.00	41.83	37.64
3	3		1	1	66.67	60.28	51.95
4	4		2	2	41.67	35.07	33.60
5	5		2	1	33.33	50.28	47.82
6	6		2	2	66.67	45.07	41.89

		()			()	()	()
2.							
.8							
7	1		1	0	50.00	28.42	26.16
8	2	()	1	1	36.36	35.20	34.17
.8							
9	1		1	0	27.27	35.33	34.40
10	2		2	0	9.09	13.51	13.65
11	3		2	0	0.00	1.77	3.15
3.							
.8							
12	1		1	0	20.00	10.00	10.12
13	2		1	0	30.00	14.31	14.32
14	3		1	1	70.00	51.67	46.71
15	4		1	1	20.00	19.58	19.52
16	5	(/)	1	0	20.00	26.94	25.43
17	6		2	0	40.00	46.18	42.73
18	7	(- -)	1	0	10.00	9.03	7.67
4.							
.8							
19	1	« »	1	1	100.00	88.17	85.83
20	2		2	2	50.00	34.95	34.03
21	3		2	2	62.50	48.39	47.90
22	4		1	0	50.00	42.47	40.13

		()			()	()	()
23	5		2	0	50.00	43.55	42.13
.8							
24	1		2	2	50.00	46.91	45.50
25	2		2	1	28.57	15.55	14.73
26	3		2	1	12.50	36.96	35.49
27	4	/	2	0	0.00	44.35	39.89
28	5		1	0	0.00	64.25	62.28

8Б, Ученик №14

Вариант 7

		()			()	()	()
1.							
.8							
1	1		2	0	41.67	42.82	38.71
2	2		2	0	25.00	41.83	37.64
3	3		1	0	66.67	60.28	51.95
4	4		2	0	41.67	35.07	33.60
5	5		2	1	33.33	50.28	47.82
6	6		2	0	66.67	45.07	41.89
2.							
.8							
7	1		1	1	50.00	28.42	26.16
8	2	()	1	1	36.36	35.20	34.17
.8							
9	1		1	0	27.27	35.33	34.40
10	2		2	0	9.09	13.51	13.65

		()			()	()	()
11	3		2	0	0.00	1.77	3.15
3.							
.8							
12	1		1	0	20.00	10.00	10.12
13	2		1	0	30.00	14.31	14.32
14	3		1	0	70.00	51.67	46.71
15	4		1	0	20.00	19.58	19.52
16	5	(/)	1	1	20.00	26.94	25.43
17	6		2	0	40.00	46.18	42.73
18	7	(- -)	1	0	10.00	9.03	7.67
4.							
.8							
19	1	« »	1	1	100.00	88.17	85.83
20	2		2	0	50.00	34.95	34.03
21	3		2	0	62.50	48.39	47.90
22	4		1	0	50.00	42.47	40.13
23	5		2	0	50.00	43.55	42.13
.8							
24	1		2	0	50.00	46.91	45.50
25	2		2	0	28.57	15.55	14.73
26	3		2	0	12.50	36.96	35.49
27	4	/	2	0	0.00	44.35	39.89
28	5		1	0	0.00	64.25	62.28

8А, Ученик №16

Вариант 7

		()			()	()	()
1.							
.8							
1	1		2	1	75.00	42.82	38.71
2	2		2	2	70.00	41.83	37.64
3	3		1	1	70.00	60.28	51.95
4	4		2	0	60.00	35.07	33.60
5	5		2	2	70.00	50.28	47.82
6	6		2	2	60.00	45.07	41.89
2.							
.8							
7	1		1	0	54.55	28.42	26.16
8	2	()	1	1	54.55	35.20	34.17
.8							
9	1		1	0	45.45	35.33	34.40
10	2		2	0	31.82	13.51	13.65
11	3		2	0	4.55	1.77	3.15
3.							
.8							
12	1		1	0	5.88	10.00	10.12
13	2		1	1	5.88	14.31	14.32
14	3		1	1	76.47	51.67	46.71
15	4		1	0	52.94	19.58	19.52
16	5	(/)	1	0	11.76	26.94	25.43
17	6		2	0	44.12	46.18	42.73

		()			()	()	()
18	7	(- -)	1	0	0.00	9.03	7.67
4.							
.8							
19	1	« »	1	1	62.50	88.17	85.83
20	2	'	2	1	31.25	34.95	34.03
21	3	'	2	1	37.50	48.39	47.90
22	4		1	1	50.00	42.47	40.13
23	5	'	2	2	50.00	43.55	42.13
.8							
24	1		2	1	43.75	46.91	45.50
25	2	'	2	0	18.75	15.55	14.73
26	3	'	2	0	25.00	36.96	35.49
27	4	/	2	1	50.00	44.35	39.89
28	5	'	1	1	87.50	64.25	62.28

8А, Ученик №21

Вариант 7

		()			()	()	()
1.							
.8							
1	1		2	0	75.00	42.82	38.71
2	2		2	0	70.00	41.83	37.64
3	3		1	0	70.00	60.28	51.95
4	4		2	0	60.00	35.07	33.60
5	5		2	0	70.00	50.28	47.82
6	6		2	0	60.00	45.07	41.89

		()			()	()	()
2.							
.8							
7	1		1	0	54.55	28.42	26.16
8	2	()	1	1	54.55	35.20	34.17
.8							
9	1		1	0	45.45	35.33	34.40
10	2		2	1	31.82	13.51	13.65
11	3		2	0	4.55	1.77	3.15
3.							
.8							
12	1		1	0	5.88	10.00	10.12
13	2		1	0	5.88	14.31	14.32
14	3		1	1	76.47	51.67	46.71
15	4		1	1	52.94	19.58	19.52
16	5	(/)	1	0	11.76	26.94	25.43
17	6		2	0	44.12	46.18	42.73
18	7	(- -)	1	0	0.00	9.03	7.67
4.							
.8							
19	1	« »	1	0	62.50	88.17	85.83
20	2		2	0	31.25	34.95	34.03
21	3		2	0	37.50	48.39	47.90
22	4		1	0	50.00	42.47	40.13

		()			()	()	()
23	5		2	0	50.00	43.55	42.13
.8							
24	1		2	0	43.75	46.91	45.50
25	2		2	0	18.75	15.55	14.73
26	3		2	0	25.00	36.96	35.49
27	4	/	2	0	50.00	44.35	39.89
28	5		1	0	87.50	64.25	62.28

8

8Б, Ученик №4

Вариант 8

		()			()	()	()
1.							
.8							
1	1	« »	2	1	30.00	32.94	32.76
2	2		2	0	0.00	15.87	15.64
3	3		2	2	60.00	37.30	30.23
4	4		2	1	30.00	28.84	27.10
2.							
.8							
5	1		1	1	33.33	56.35	52.29
6	2	-	1	1	66.67	81.76	79.39
7	3		1	1	66.67	70.54	65.02
8	4		1	1	66.67	58.92	51.76
9	5		1	1	58.33	60.54	58.71

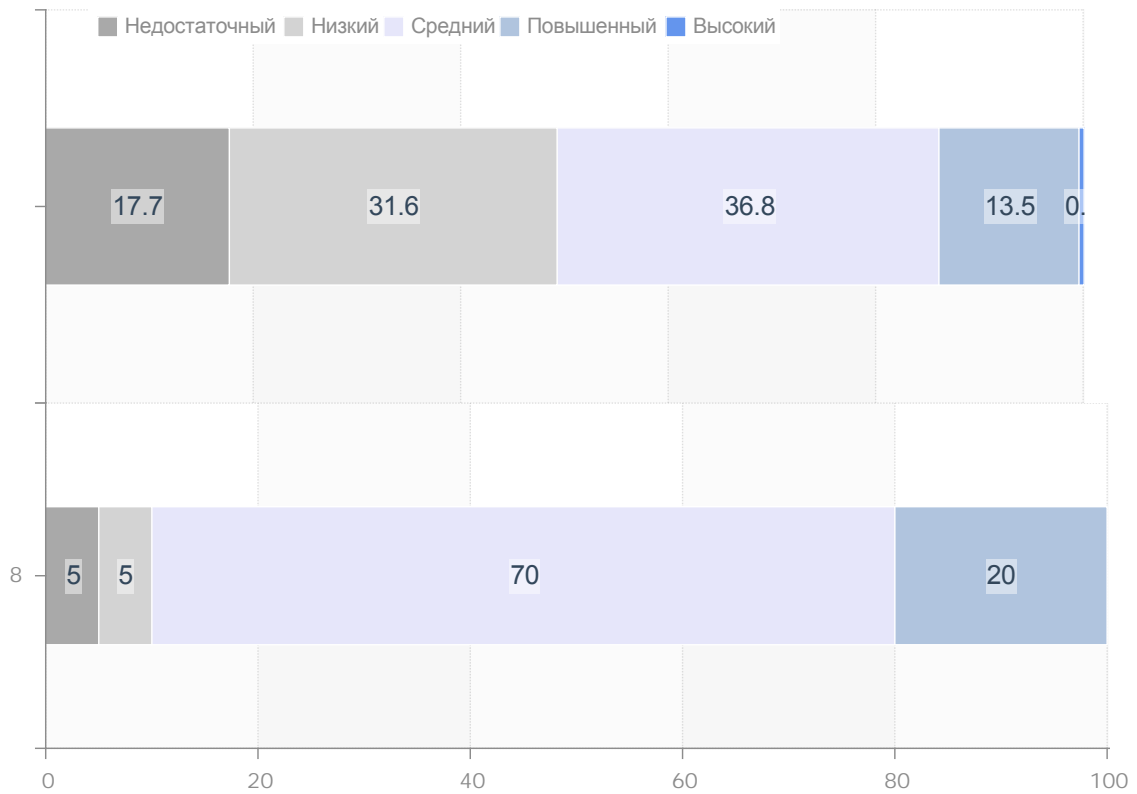
		()			()	()	()
10	6		2	0	20.83	35.74	33.85
11	7	(- -)	1	1	58.33	44.32	41.22
12	8		1	0	33.33	32.97	30.54
3.							
.8							
13	1		1	1	80.00	59.95	54.40
14	2		2	0	20.00	39.10	35.17
15	3		1	0	20.00	7.08	10.75
16	4		2	2	70.00	34.88	31.16
.8							
17	1		1	1	60.00	81.20	77.58
18	2		1	1	100.00	90.46	85.70
19	3		2	0	40.00	17.98	14.41
20	4		1	0	40.00	20.71	21.32
21	5		2	1	30.00	20.57	16.67
4.							
.8							
22	1		1	1	50.00	28.42	26.16
23	2	()	1	0	36.36	35.20	34.17
.8							
24	1		1	1	27.27	35.33	34.40
25	2		2	1	9.09	13.51	13.65
26	3		2	0	0.00	1.77	3.15

8Б, Ученик №13

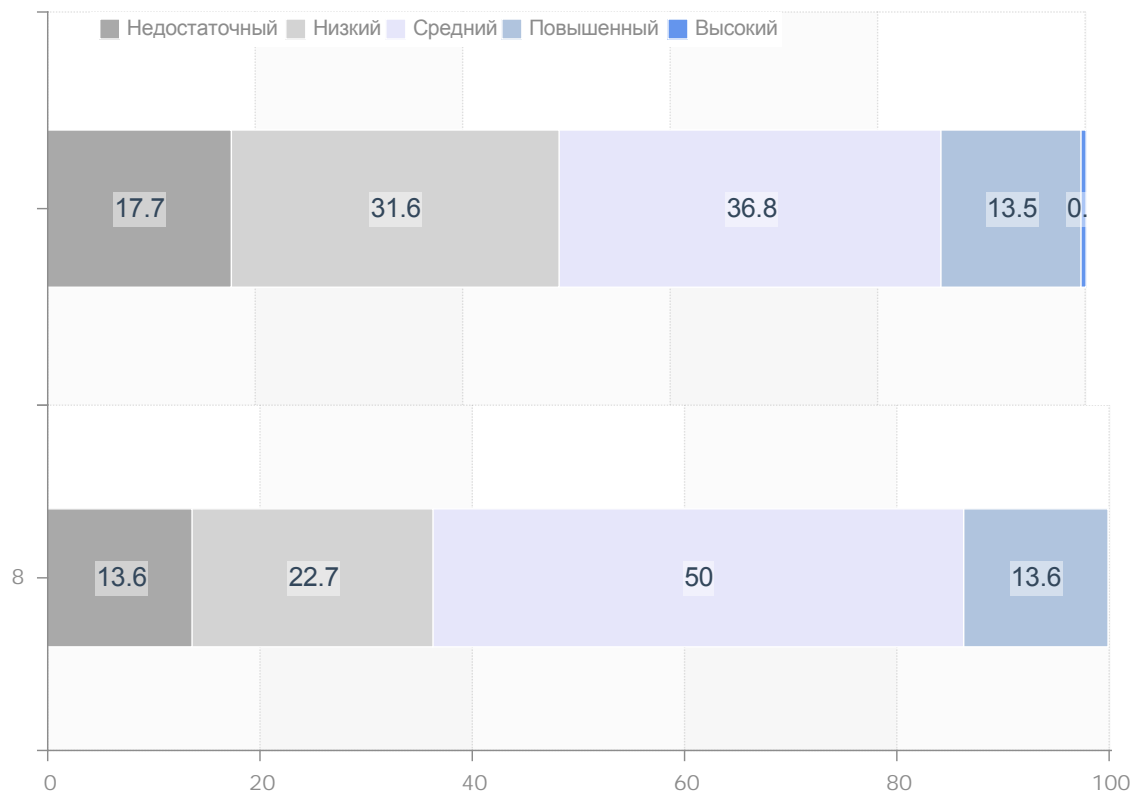
Вариант 8

		()			()	()	()
1.							
.8							
1	1	« »	2	0	30.00	32.94	32.76
2	2	'	2	0	0.00	15.87	15.64
3	3		2	2	60.00	37.30	30.23
4	4		2	1	30.00	28.84	27.10
2.							
.8							
5	1		1	1	33.33	56.35	52.29
6	2	-	1	1	66.67	81.76	79.39
7	3	,	1	1	66.67	70.54	65.02
8	4		1	0	66.67	58.92	51.76
9	5	-	1	0	58.33	60.54	58.71
10	6		2	0	20.83	35.74	33.85
11	7	(- -) , - -)	1	1	58.33	44.32	41.22
12	8	,	1	1	33.33	32.97	30.54
3.							
.8							
13	1		1	1	80.00	59.95	54.40
14	2	'	2	2	20.00	39.10	35.17
15	3		1	1	20.00	7.08	10.75
16	4	'	2	2	70.00	34.88	31.16
.8							

		()			()	()	()
17	1		1	1	60.00	81.20	77.58
18	2		1	1	100.00	90.46	85.70
19	3		2	2	40.00	17.98	14.41
20	4		1	1	40.00	20.71	21.32
21	5		2	1	30.00	20.57	16.67
4.							
.8							
22	1		1	1	50.00	28.42	26.16
23	2	()	1	1	36.36	35.20	34.17
.8							
24	1		1	0	27.27	35.33	34.40
25	2		2	0	9.09	13.51	13.65
26	3		2	0	0.00	1.77	3.15



	8A	Свердловская область
Недостаточный	5.0	17.7
Низкий	5.0	31.6
Средний	70.0	36.8
Повышенный	20.0	13.5
Высокий	0.0	0.5



	8Б	Свердловская область
Недостаточный	13.6	17.7
Низкий	22.7	31.6
Средний	50.0	36.8
Повышенный	13.6	13.5
Высокий	0.0	0.5

